

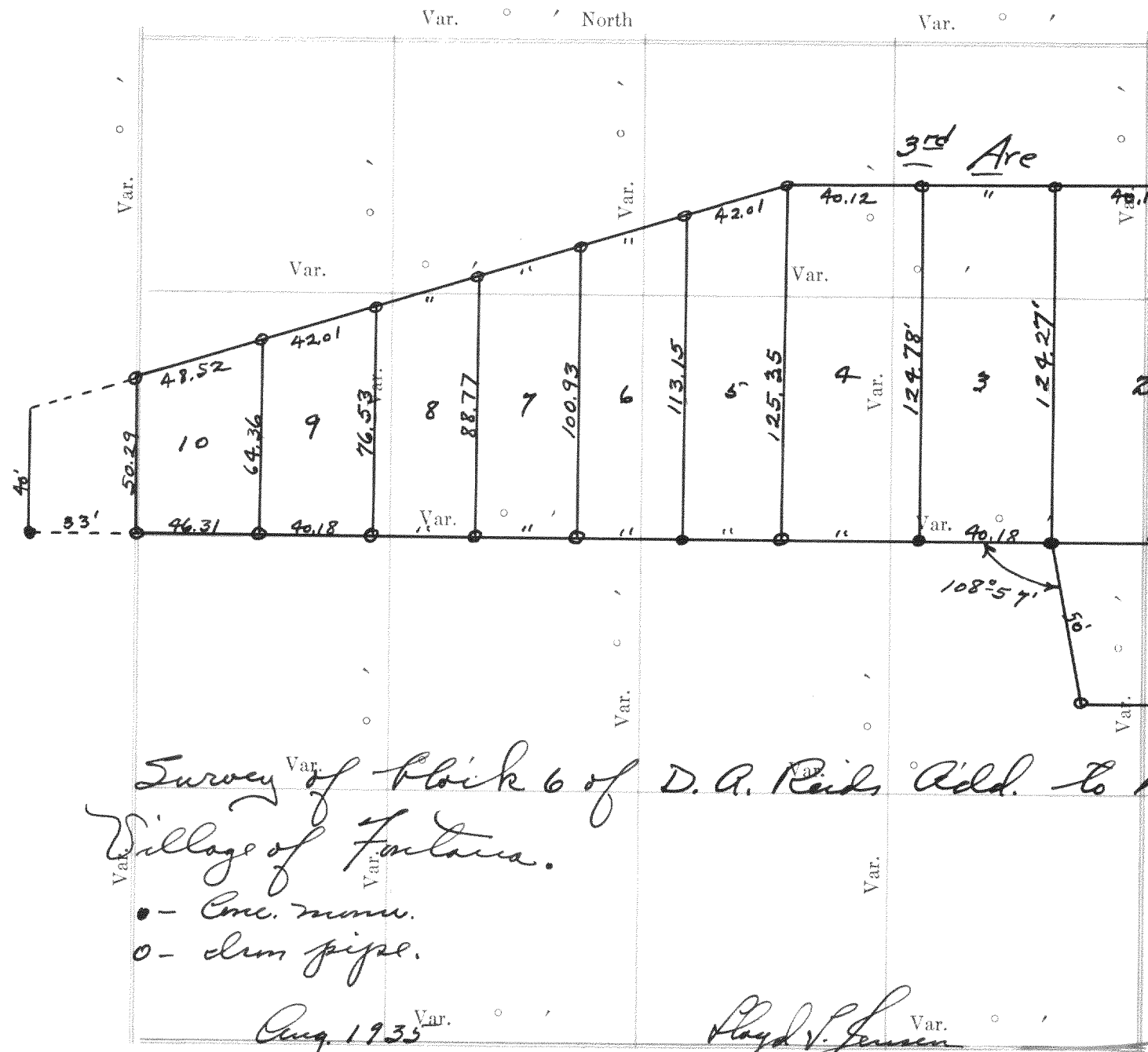
Record of Survey.

DESCRIPTION

OF SECTION, QUARTER SECTION AND QUARTER QUARTER SECTION CORNERS

Township..... North of Range..... of 4 Principal Meridian as presented by the courses and distances on the following plat, and annexed field-notes of survey:
 Established the center of the section at the point of intersection of STRAIGHT quarter lines.
 Established all quarter-quarter corners upon the section boundary at proportional distances between known section and quarter section corners, according to the original field-notes of the Government survey.
 Established all lost corners at proportionate distances between known corners, according to the original field notes of the Government survey.

No. 663



Survey of Block 6 of D. A. Reid's Add. to the Village of Fontana.
 • - Conc. monu.
 ○ - Iron pipe.

Plat of Section..... Township..... North, Range..... of 4 Principal Meridian Scale 80 chains to 6 inches. The figures in red ink are the lengths of the lines as stated in the field-notes of the Government survey.

Declination of the Magnetic Meridian from the True Meridian.....
 Surveyed and sub-divided..... A. D. 1....., in accordance with the State Laws and Instructions of the Commissioner of the General Land office, and recorded on pages..... of Register in the County Clerk's office.

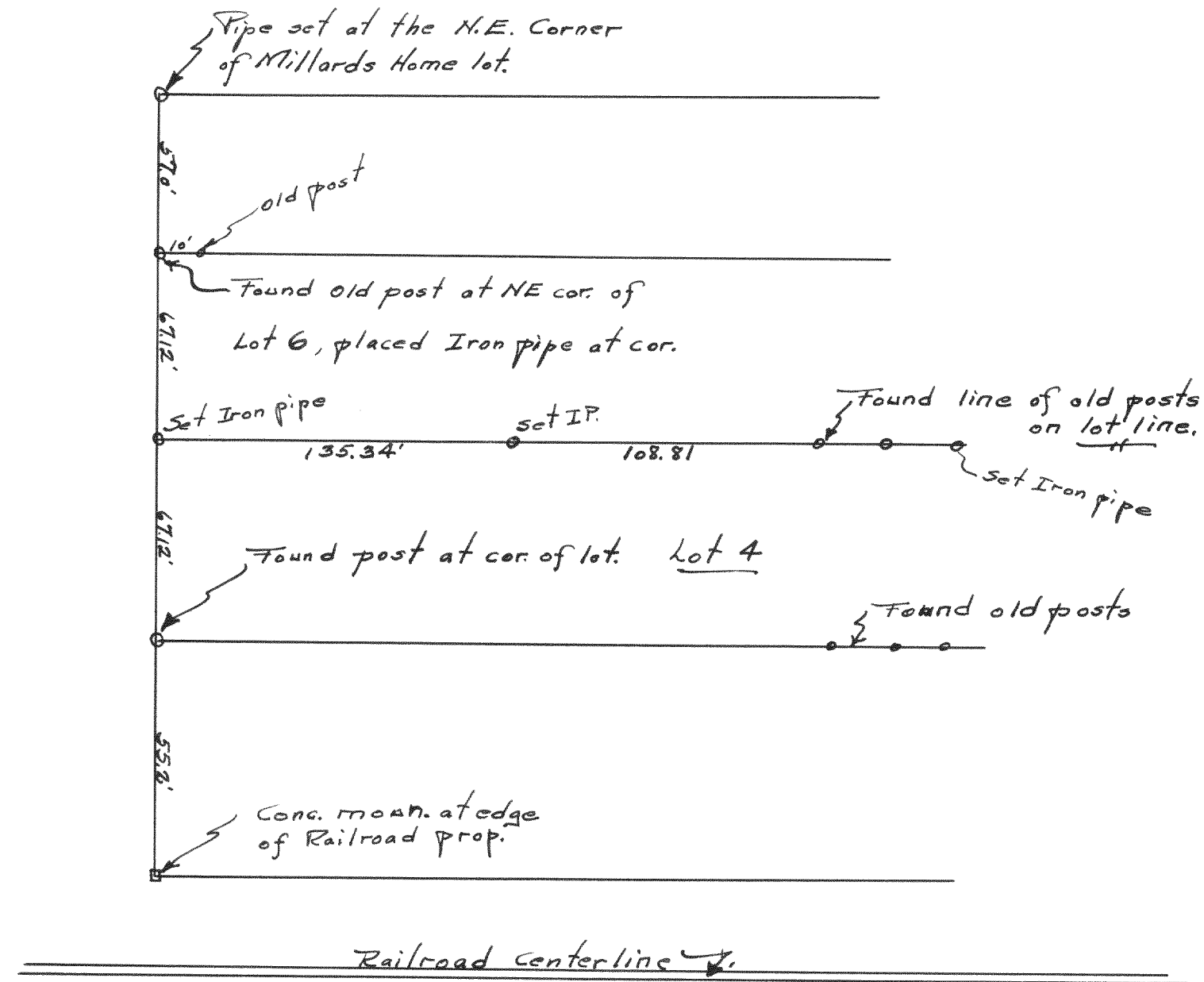
Witness my hand this..... day of..... A. D. 1..... SURVEYOR.

GOVERNMENT CORNERS				H. C. MILLER CO. MFG. STATIONERS, MILWAUKEE, WIS. 15000												
No.	Bearing Trees	In. Dia.	Courses they bear	Links Distant	Bearing Trees	In. Dia.	Courses they bear	Links Distant	Bearing Trees	In. Dia.	Courses they bear	Links Distant	Bearing Trees	In. Dia.	Courses they bear	Links Distant
1.																
2.																
3.																
4.																
5.																
6.																
7.																
8.																
Subdivision Corners																
No.																
1.	Center 1/4 Sec. Cor.															
2.	North 1/4-1/4s N. W. qr.,															
3.	East 1/4-1/4s N. W. qr.,															
4.	South 1/4-1/4s N. W. qr.,															
5.	West 1/4-1/4s N. W. qr.,															
6.	Center 1/4-1/4s N. W. qr.,															
7.	North 1/4-1/4s N. E. qr.,															
8.	East 1/4-1/4s N. E. qr.,															
9.	South 1/4-1/4s N. E. qr.,															
10.	Center 1/4-1/4s N. E. qr.,															
11.	East 1/4-1/4s S. E. qr.,															
12.	South 1/4-1/4s S. E. qr.,															
13.	West 1/4-1/4s S. E. qr.,															
14.	Center 1/4-1/4s S. E. qr.,															
15.	South 1/4-1/4s S. W. qr.,															
16.	West 1/4-1/4s S. W. qr.,															
17.	Center 1/4-1/4s S. W. qr.,															

NAMES OF SWORN ASSISTANTS

CHAINMEN	FLAGMEN	AXMEN

no. 664



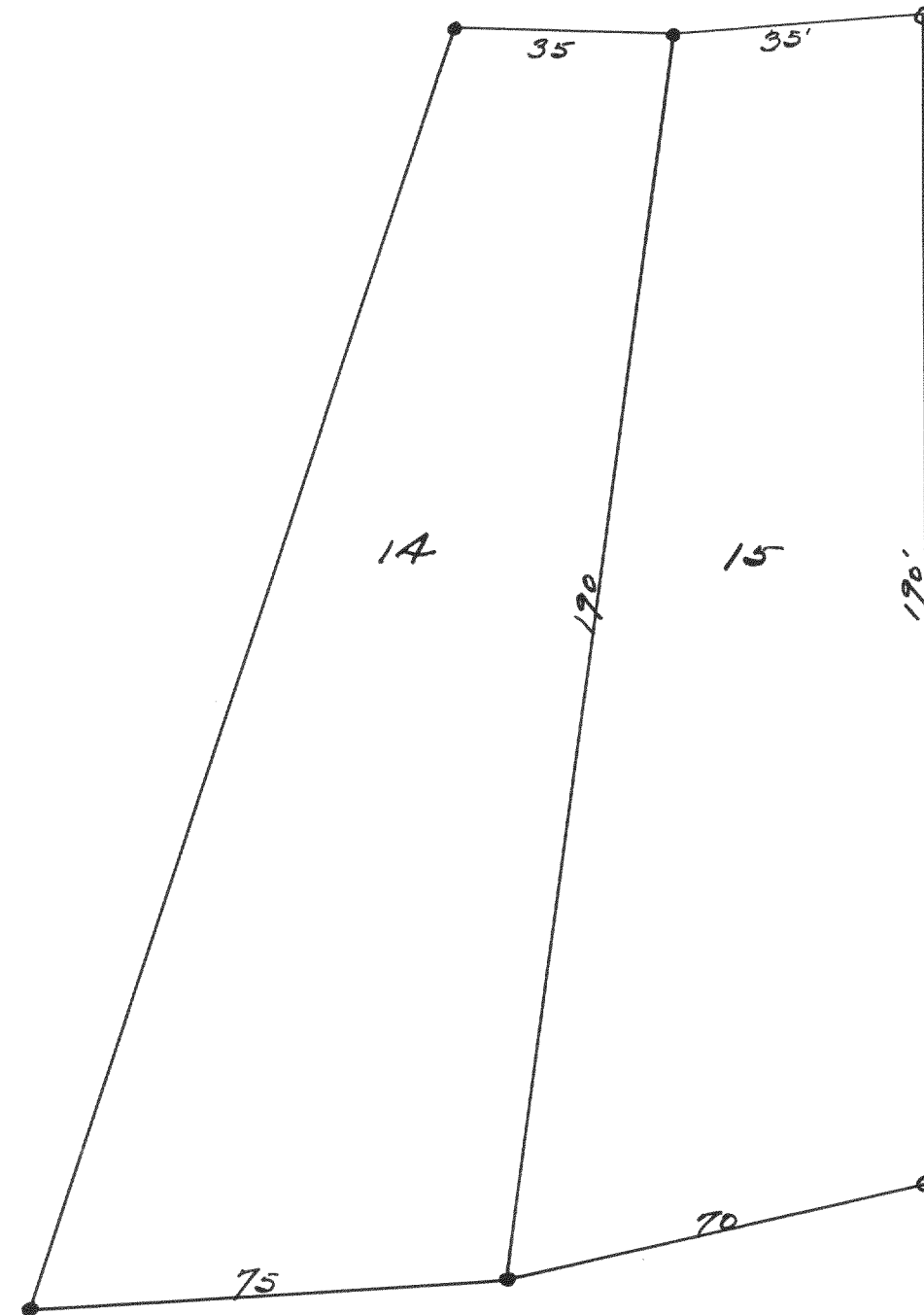
Survey of Lot 4 of Block 4 of Triggs 2nd Add to the City of Whitewater.

Oct, 1935

Lloyd S. Jensen
County Surveyor.

no. 665

Survey of Lot 15 of Cedar Pt. Park
1st Add., Williams Bay Wisconsin.



- o - concrete monument
- o - iron pipe

Nov. 25, 1935

Lloyd S. Jensen
Co. Surveyor