

No 520

Record of Survey. 35-3-16

DESCRIPTION

OF SECTION, QUARTER SECTION AND QUARTER QUARTER SECTION CORNERS

Township..... North of Range..... of 4 Principal Meridian
 as presented by the courses and distances on the following plat, and annexed field-notes of survey:
 Established the center of the section at the point of intersection of STRAIGHT quarter lines.
 Established all quarter-quarter corners upon the section boundary at proportional distances between known section and quarter section corners, according to the original field-notes of the Government survey.
 Established all lost corners at proportionate distances between known corners, according to the original field notes of the Government survey.



Plat of Section..... Township..... North, Range..... of 4 Principal Meridian Scale
 80 chains to 6 inches. The figures in red ink are the lengths of the lines as stated in the field-notes of the
 Government survey.
 Declination of the Magnetic Meridian from the True Meridian.....
 Surveyed and sub-divided..... A. D. 1....., in accordance
 with the State Laws and Instructions of the Commissioner of the General Land office, and recorded on pages
 of Register in the County Clerk's office.
 Witness my hand this..... day of..... A. D. 1.....
 SURVEYOR.

GOVERNMENT CORNERS	Bearing Trees				In. Dia.				Courses they bear				Links Distant			
	Bearing	In.	Course	Links	Bearing	In.	Course	Links	Bearing	In.	Course	Links	Bearing	In.	Course	Links
No.																
1. N. W. Sec. Cor. identified,																
2. N. E. Sec. Cor. identified,																
3. S. E. Sec. Cor. identified,																
4. S. W. Sec. Cor. identified,																
5. N. 1/4 Sec. Cor. identified,																
6. E. 1/4 Sec. Cor. identified,																
7. S. 1/4 Sec. Cor. identified,																
8. W. 1/4 Sec. Cor. identified,																
Subdivision Corners																
No.																
1. Center 1/4 Sec. Cor.																
2. North 1/4-1/4s N. W. qr.,																
3. East 1/4-1/4s N. W. qr.,																
4. South 1/4-1/4s N. W. qr.,																
5. West 1/4-1/4s N. W. qr.,																
6. Center 1/4-1/4s N. W. 1/4 found																
7. North 1/4-1/4s N. E. qr.,																
8. East 1/4-1/4s N. E. qr.,																
9. South 1/4-1/4s N. E. qr.,																
10. Center 1/4-1/4s N. E. qr.,																
11. East 1/4-1/4s S. E. qr.,																
12. South 1/4-1/4s S. E. qr.,																
13. West 1/4-1/4s S. E. qr.,																
14. Center 1/4-1/4s S. E. qr.,																
15. South 1/4-1/4s S. W. qr.,																
16. West 1/4-1/4s S. W. qr.,																
17. Center 1/4-1/4s S. W. qr.																

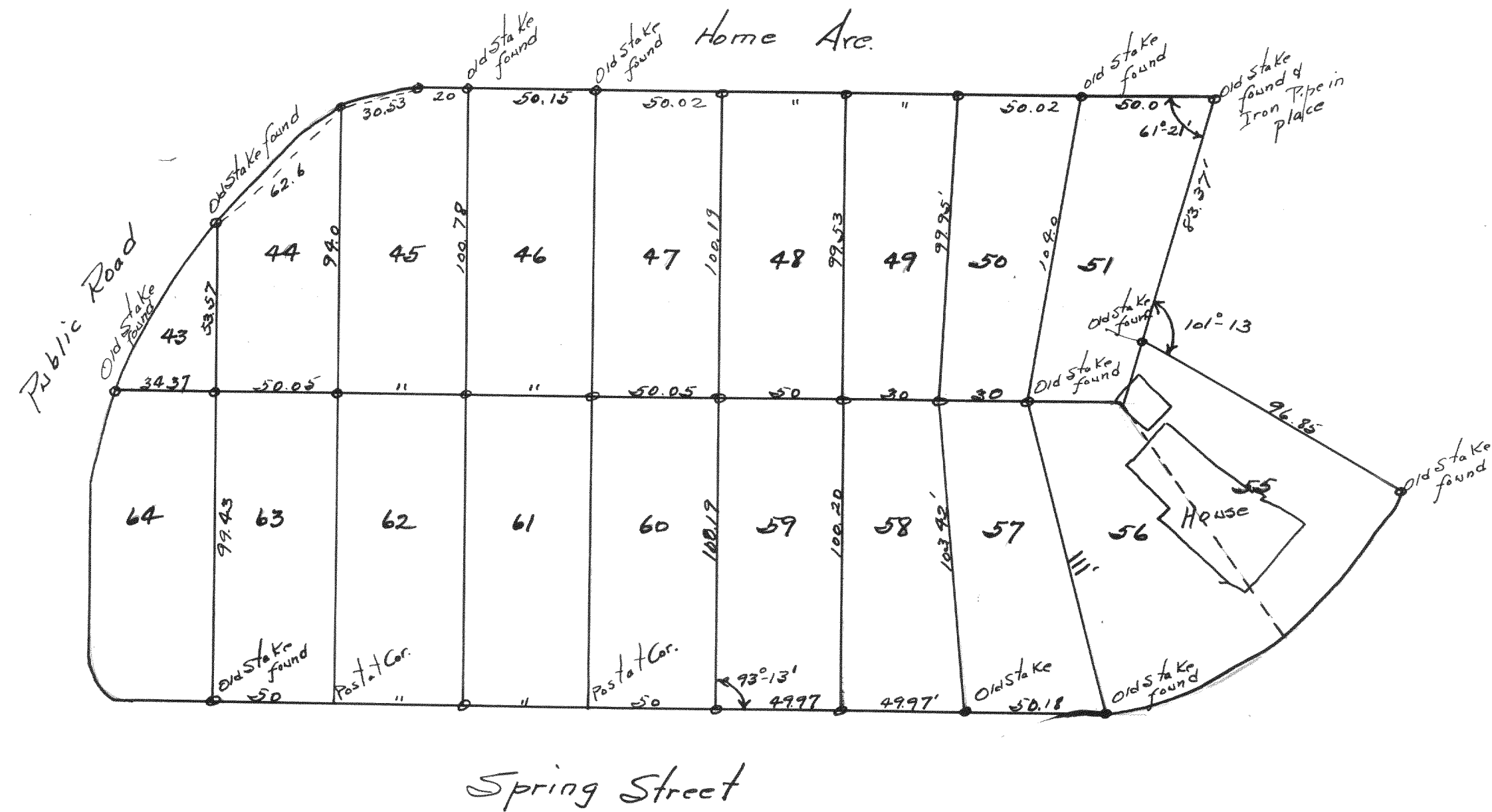
Plat of a survey for Fred Ellsworth and Son
 Acres to measure the land enclosed by the
 fences at the south end of the Ellsworth farm.
 The south 1/4 corner of 35 was replaced with a
 concrete monument & the N. 1/4 cor. of 2 was replaced
 with an iron pipe, flush with the surface.

Surveyed by Lloyd S. Jensen
 April 4, 1934

NAMES OF SWORN ASSISTANTS		
CHAINMEN	FLAGMEN	AXMEN

No 521

Fontana 11-1-16
Buena Vista



Pilot of survey of lots in Buena Vista, a subdivision located in the Village of Fontana.
 All stakes were found as noted, iron pipes were placed at all points marked o.

Surveyed by Lloyd S. Jensen
 April 7, 9+10, 1934