

Record of Survey.

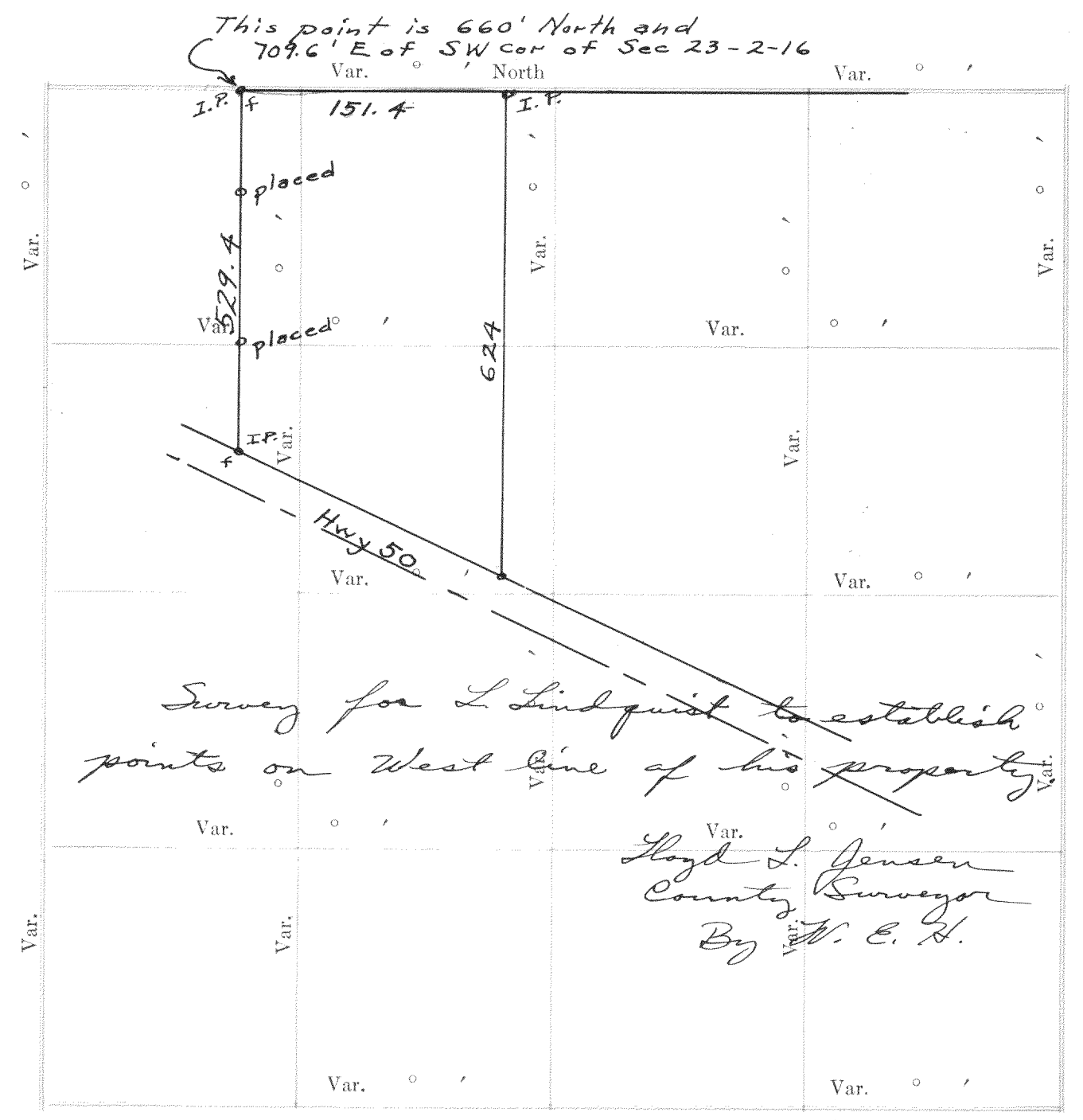
No. 734

Township..... North of Range..... of 4 Principal Meridian as presented by the courses and distances on the following plat, and annexed field-notes of survey:

Established the center of the section at the point of intersection of STRAIGHT quarter lines.

Established all quarter-quarter corners upon the section boundary at proportional distances between known section and quarter section corners, according to the original field-notes of the Government survey.

Established all lost corners at proportionate distances between known corners, according to the original field notes of the Government survey.



Plat of Section..... Township..... North, Range..... of 4 Principal Meridian Scale 80 chains to 6 inches. The figures in red ink are the lengths of the lines as stated in the field-notes of the Government survey.

Declination of the Magnetic Meridian from the True Meridian.....

Surveyed and sub-divided..... A. D. 1....., in accordance with the State Laws and Instructions of the Commissioner of the General Land office, and recorded on pages..... of Register in the County Clerk's office.

Witness my hand this..... day of..... A. D. 1.....

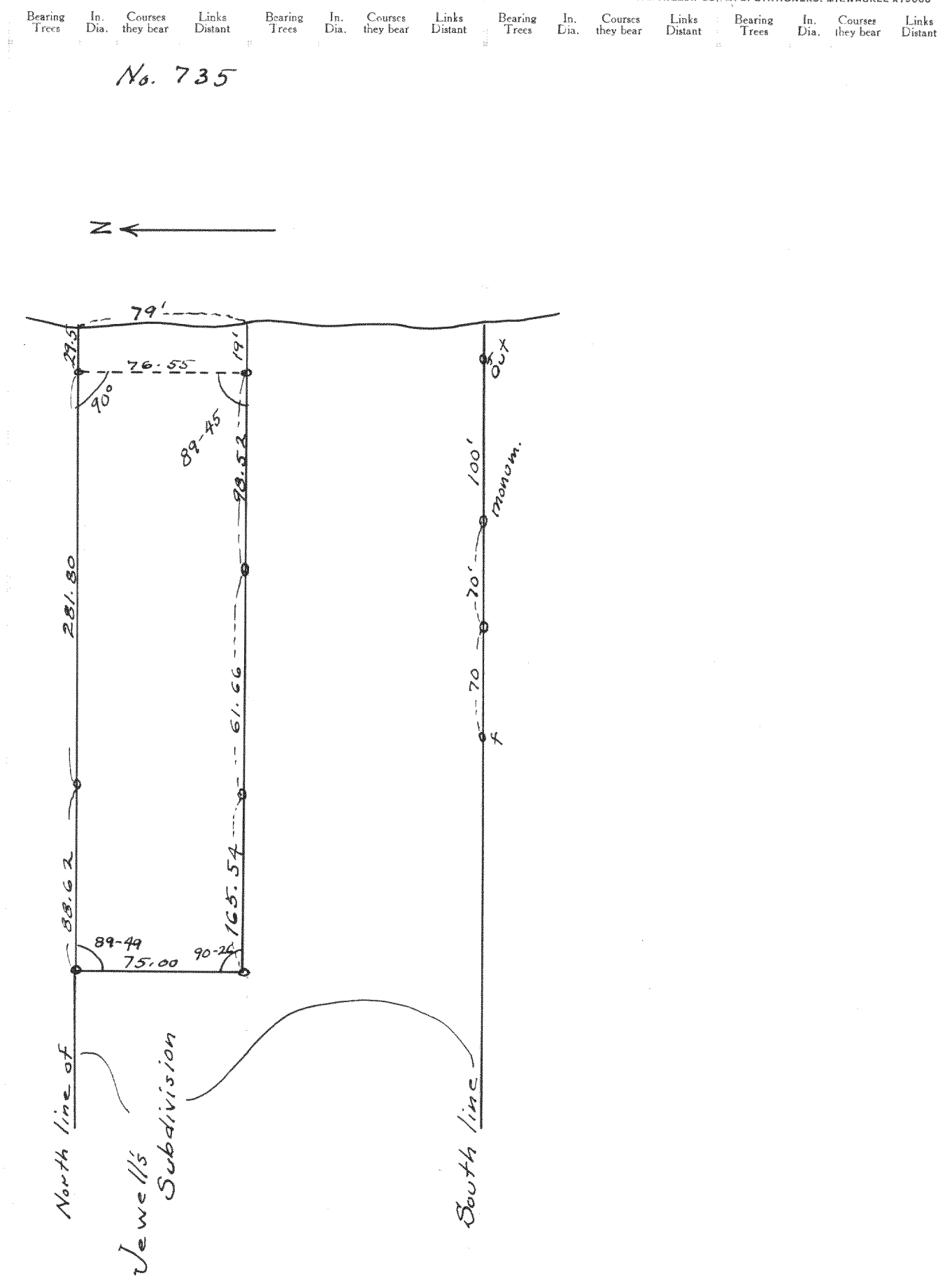
..... SURVEYOR.

DESCRIPTION

OF SECTION, QUARTER SECTION AND QUARTER QUARTER SECTION CORNERS

H. C. MILLER CO. MFG. STATIONERS. MILWAUKEE WISCONSIN

- GOVERNMENT CORNERS
- No.
1. N. W. Sec. Cor. identified,
 2. N. E. Sec. Cor. identified,
 3. S. E. Sec. Cor. identified,
 4. S. W. Sec. Cor. identified,
 5. N. 1/4 Sec. Cor. identified,
 6. E. 1/4 Sec. Cor. identified,
 7. S. 1/4 Sec. Cor. identified,
 8. W. 1/4 Sec. Cor. identified,
- Subdivision Corners
- No.
1. Center 1/4 Sec. Cor.
 2. North 1/4-1/4s N. W. qr.,
 3. East 1/4-1/4s N. W. qr.,
 4. South 1/4-1/4s N. W. qr.,
 5. West 1/4-1/4s N. W. qr.,
 6. Center 1/4-1/4s N. W. qr.,
 7. North 1/4-1/4s N. E. qr.,
 8. East 1/4-1/4s N. E. qr.,
 9. South 1/4-1/4s N. E. qr.,
 10. Center 1/4-1/4s N. E. qr.,
 11. East 1/4-1/4s S. E. qr.,
 12. South 1/4-1/4s S. E. qr.,
 13. West 1/4-1/4s S. E. qr.,
 14. Center 1/4-1/4s S. E. qr.,
 15. South 1/4-1/4s S. W. qr.,
 16. West 1/4-1/4s S. W. qr.,
 17. Center 1/4-1/4s S. W. qr.

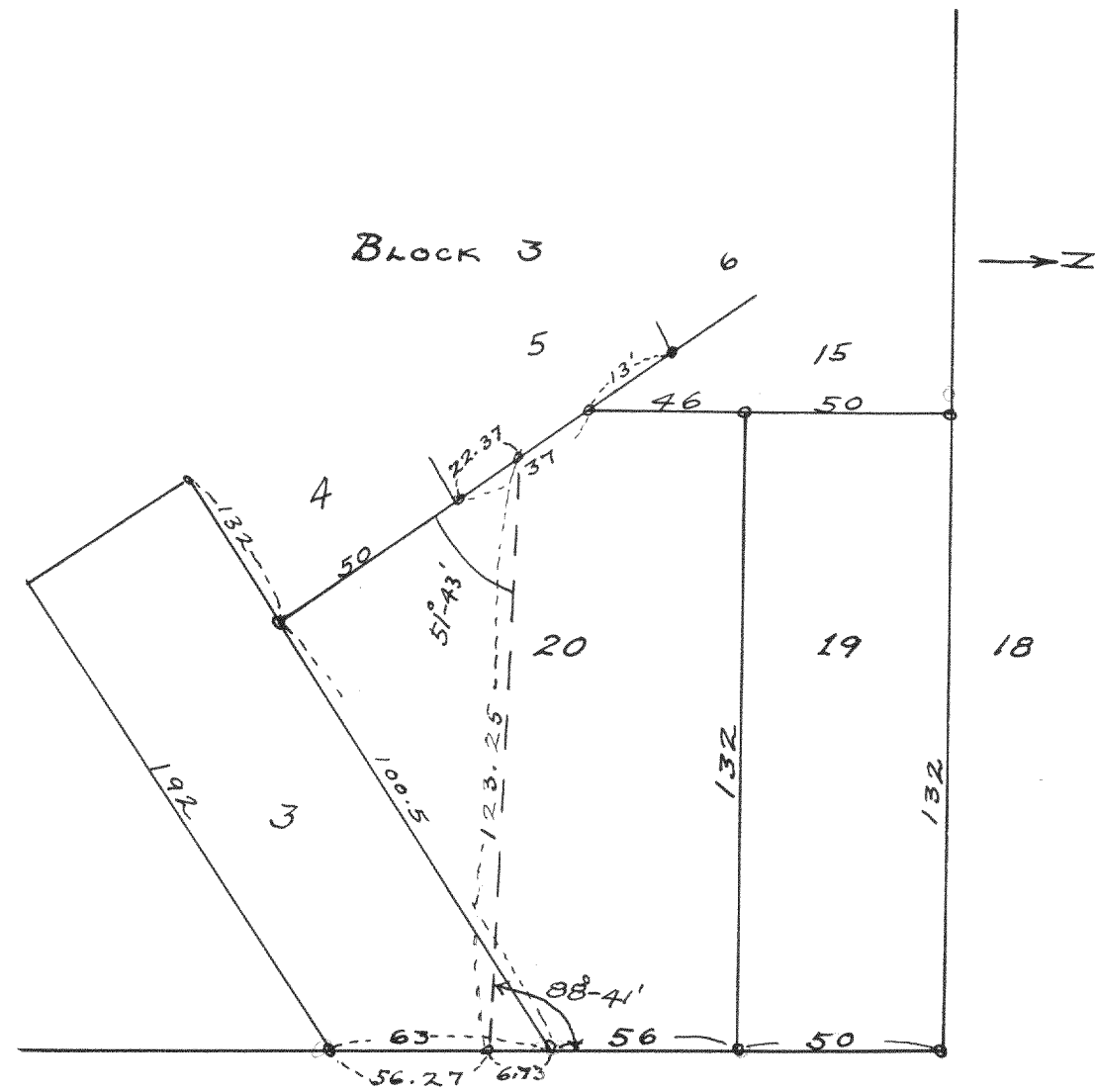


Survey for Walter Jewell of a parcel from Lot A of Jewell's subdivision in the South Township.

NAMES OF SWORN ASSISTANTS

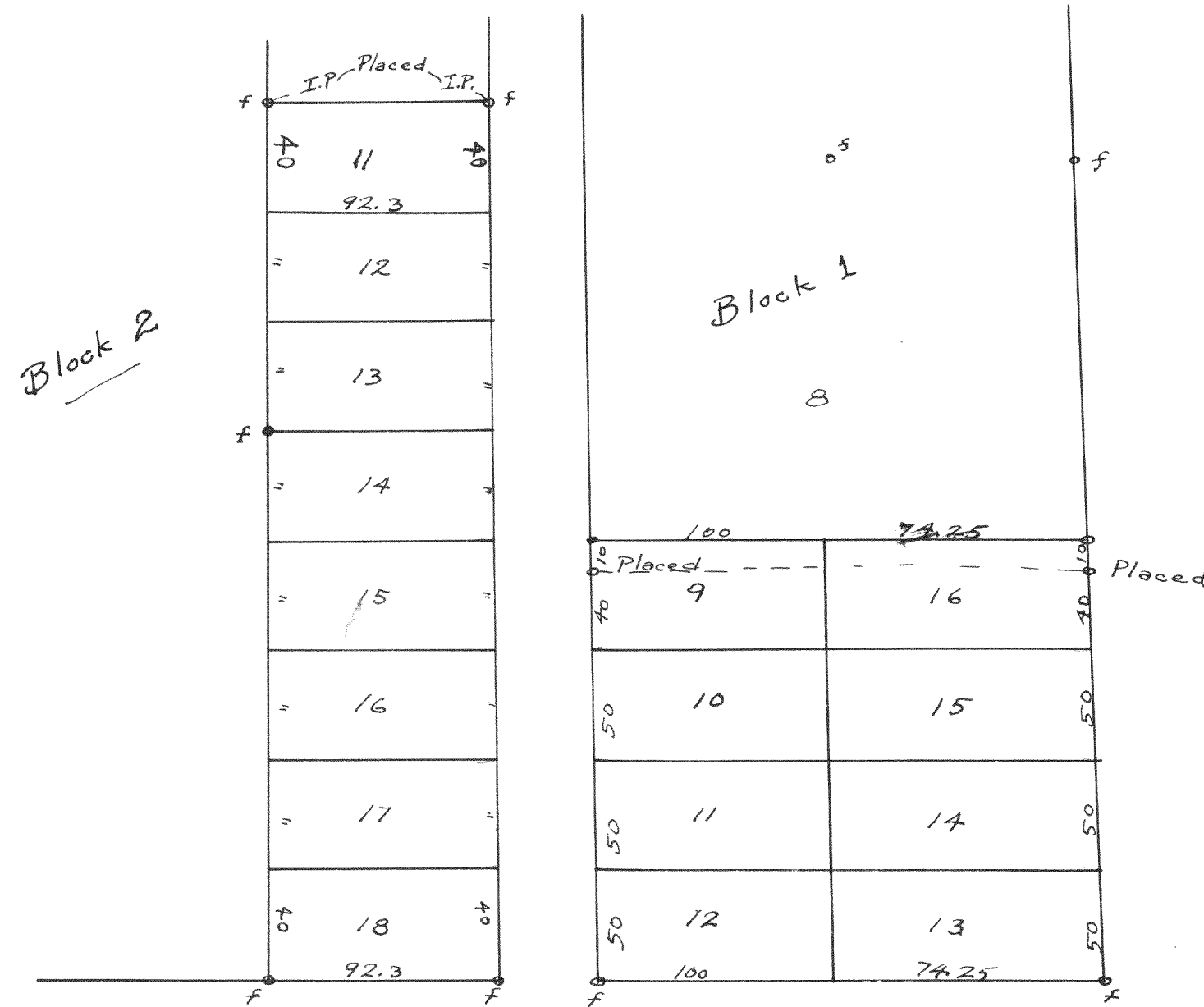
CHAINMEN FLAGMEN AXMEN

Lloyd L. Jensen
County Surveyor
By W. E. H.



Survey of parcel from Lots 3 & 20
for T. J. Kirkpatrick in Inlet Oaks
subdivision on Delawan Lake.

Lloyd L. Jensen
County Surveyor
By W. E. H.



Survey for E. B. Potter of all the
lots shown, in Potters Subd. at Delawan
Lake excepting 10' of 9 & 16 Block 1 which
was retained by E. B. Potter.

Lloyd L. Jensen
County Surveyor
By W. E. H.