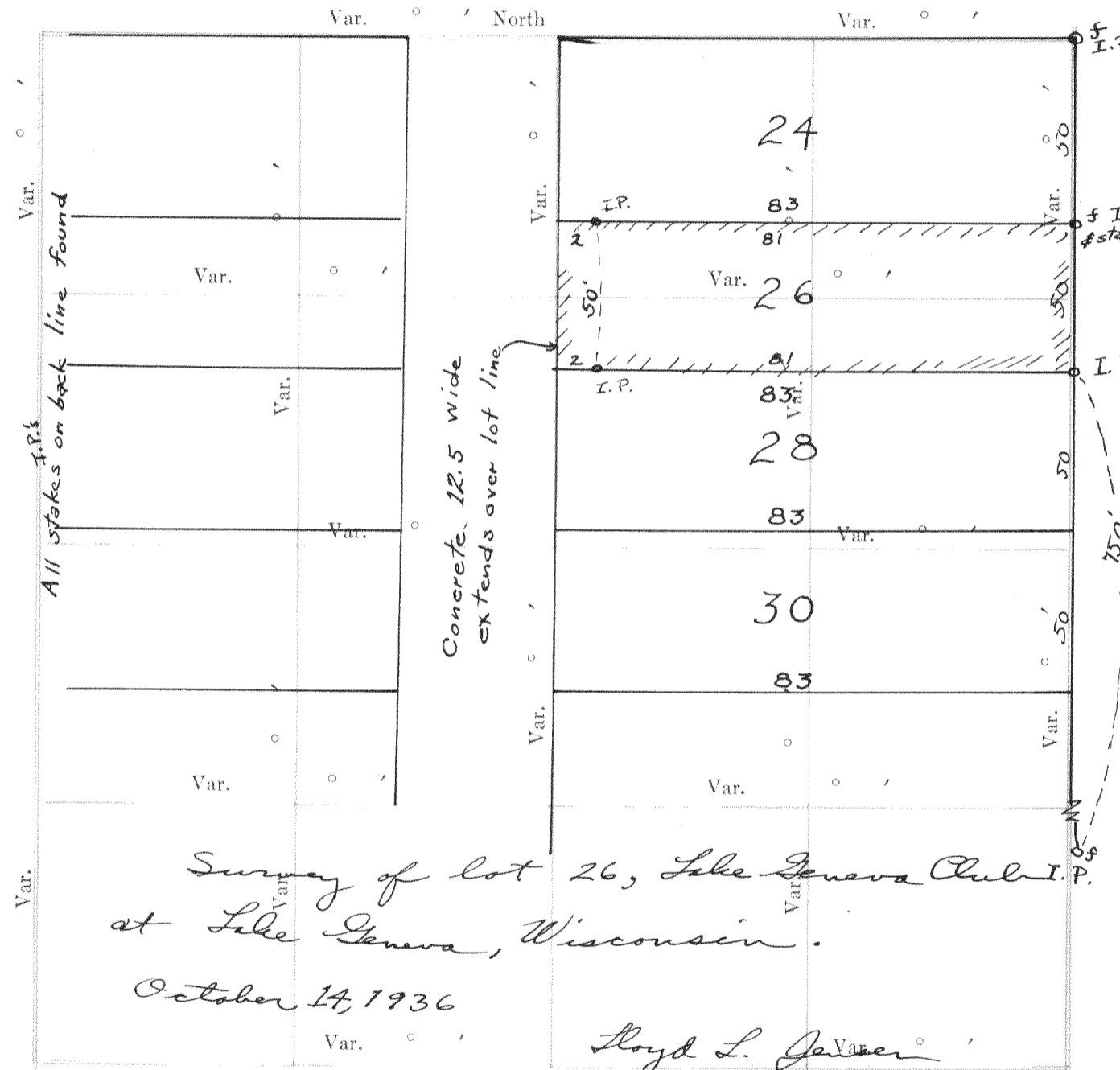


Township..... North of Range..... of 4 Principal Meridian as presented by the courses and distances on the following plat, and annexed field-notes of survey:

Established the center of the section at the point of intersection of STRAIGHT quarter lines.

Established all quarter-quarter corners upon the section boundary at proportional distances between known section and quarter section corners, according to the original field-notes of the Government survey.

Established all lost corners at proportionate distances between known corners, according to the original field notes of the Government survey.



Survey of lot 26, Lake Geneva Club  
 at Lake Geneva, Wisconsin.  
 October 14, 1936

Lloyd L. Jensen  
 County Surveyor  
 By W. E. H.

Plat of Section....., Township..... North, Range..... of 4 Principal Meridian Scale 80 chains to 6 inches. The figures in red ink are the lengths of the lines as stated in the field-notes of the Government survey.

Declination of the Magnetic Meridian from the True Meridian.....

Surveyed and sub-divided..... A. D. 1....., in accordance with the State Laws and Instructions of the Commissioner of the General Land office, and recorded on pages..... of Register in the County Clerk's office.

Witness my hand this..... day of..... A. D. 1.....

..... SURVEYOR.

OF SECTION, QUARTER SECTION AND QUARTER QUARTER SECTION CORNERS

GOVERNMENT CORNERS

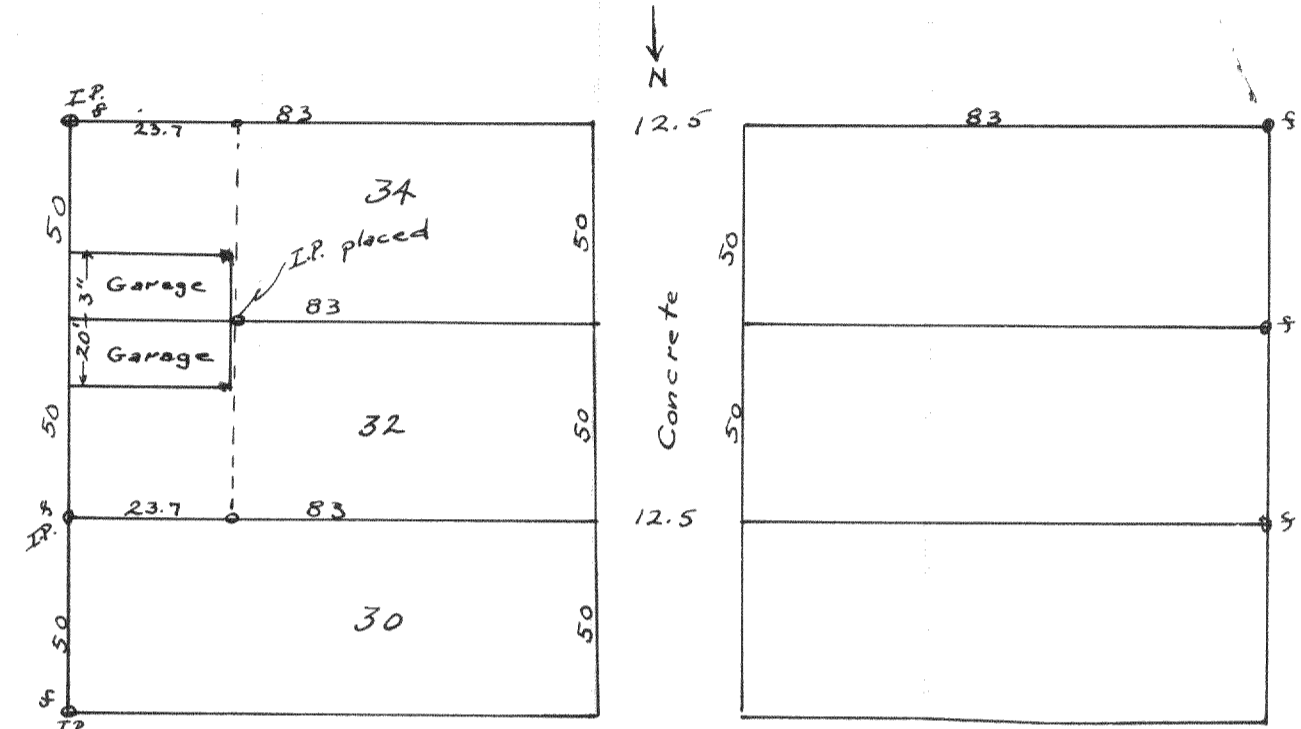
- No. 1. N. W. Sec. Cor. identified,
2. N. E. Sec. Cor. identified,
3. S. E. Sec. Cor. identified,
4. S. W. Sec. Cor. identified,
5. N. 1/4 Sec. Cor. identified,
6. E. 1/4 Sec. Cor. identified,
7. S. 1/4 Sec. Cor. identified,
8. W. 1/4 Sec. Cor. identified,

Subdivision Corners

- No. 1. Center 1/4 Sec. Cor.
2. North 1/4-1/4s N. W. qr.,
3. East 1/4-1/4s N. W. qr.,
4. South 1/4-1/4s N. W. qr.,
5. West 1/4-1/4s N. W. qr.,
6. Center 1/4-1/4s N. W. qr.,
7. North 1/4-1/4s N. E. qr.,
8. East 1/4-1/4s N. E. qr.,
9. South 1/4-1/4s N. E. qr.,
10. Center 1/4-1/4s N. E. qr.,
11. East 1/4-1/4s S. E. qr.,
12. South 1/4-1/4s S. E. qr.,
13. West 1/4-1/4s S. E. qr.,
14. Center 1/4-1/4s S. E. qr.,
15. South 1/4-1/4s S. W. qr.,
16. West 1/4-1/4s S. W. qr.,
17. Center 1/4-1/4s S. W. qr.

H. C. MILLER CO. MFG. STATIONERS, MILWAUKEE WISCONSIN											
Bearing	In.	Courses	Links	Bearing	In.	Courses	Links	Bearing	In.	Courses	Links
Trees	Dia.	they bear	Distant	Trees	Dia.	they bear	Distant	Trees	Dia.	they bear	Distant

No. 724



Survey for Mrs. Vera Sand at  
 Lake Geneva Club to locate lot line 34 & 32  
 in front of garages.

October 14, 1936

Lloyd L. Jensen  
 County Surveyor  
 By W. E. H.

NAMES OF SWORN ASSISTANTS

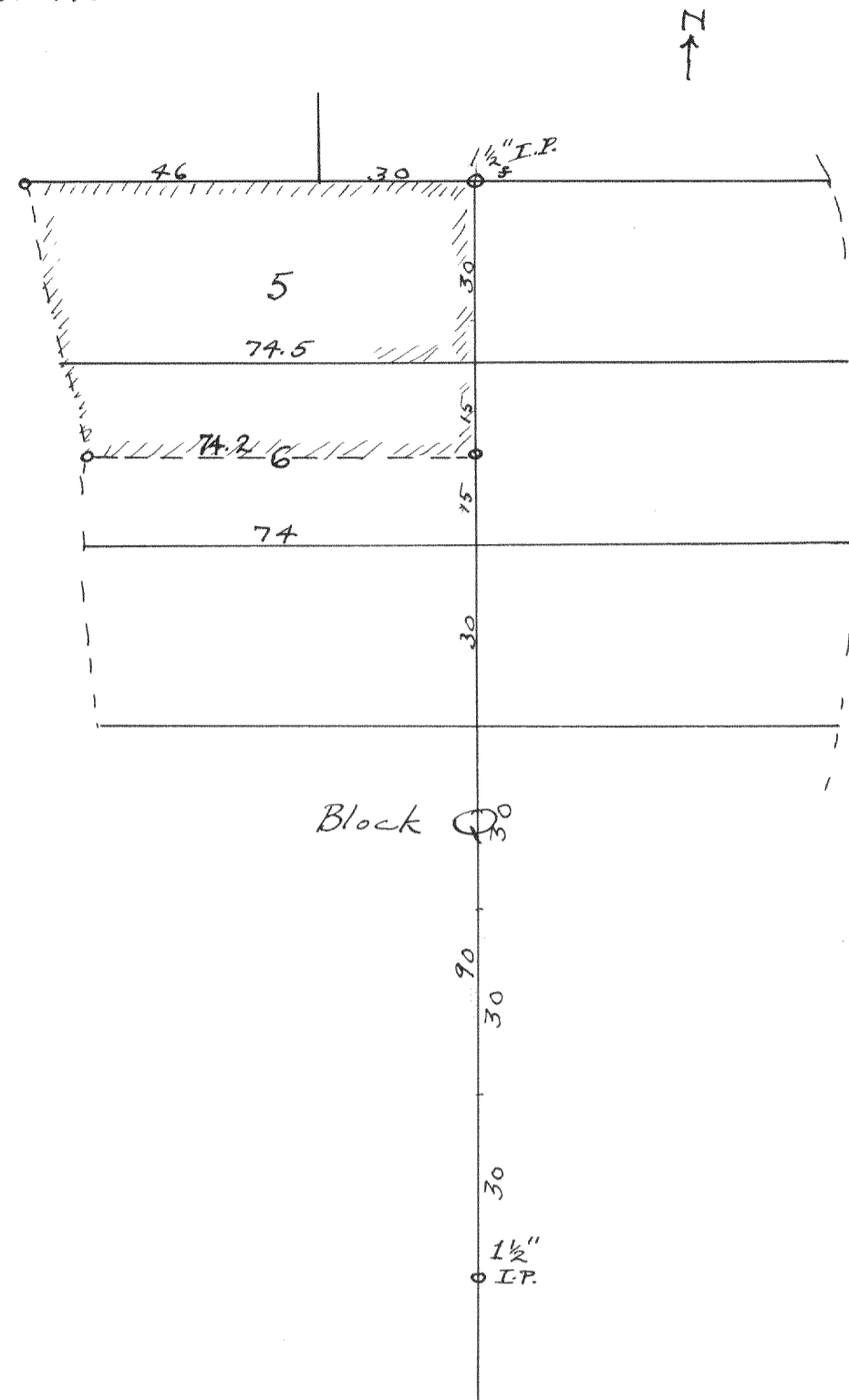
CHAINMEN

FLAGMEN

AXMEN

232

No. 725

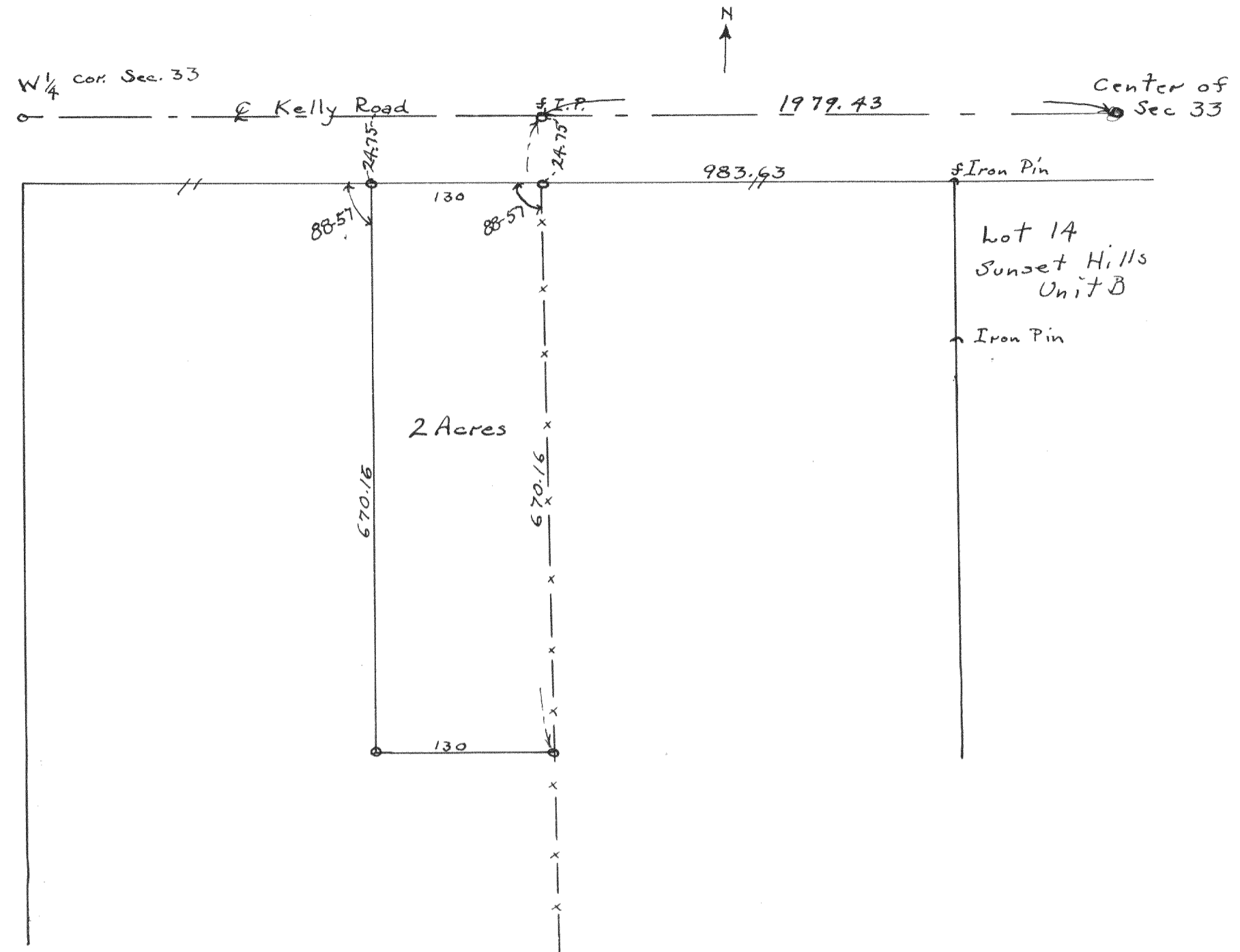


Survey of lot 5 & South 1/2 of lot 6, Block Q  
for Art. Anderson in the Assembly Grounds  
at Lake Delavan, Wisconsin.

October 14, 1936

Lloyd L. Jensen  
County Surveyor  
By W. E. H.

No. 726



Survey for George Dayton of a  
2 acres parcel in Sec 33, T2N, R17E  
taken from 20 acres owned by Art Krouse.

Oct. 16, 1936

Lloyd L. Jensen  
County Surveyor  
By W. E. H.