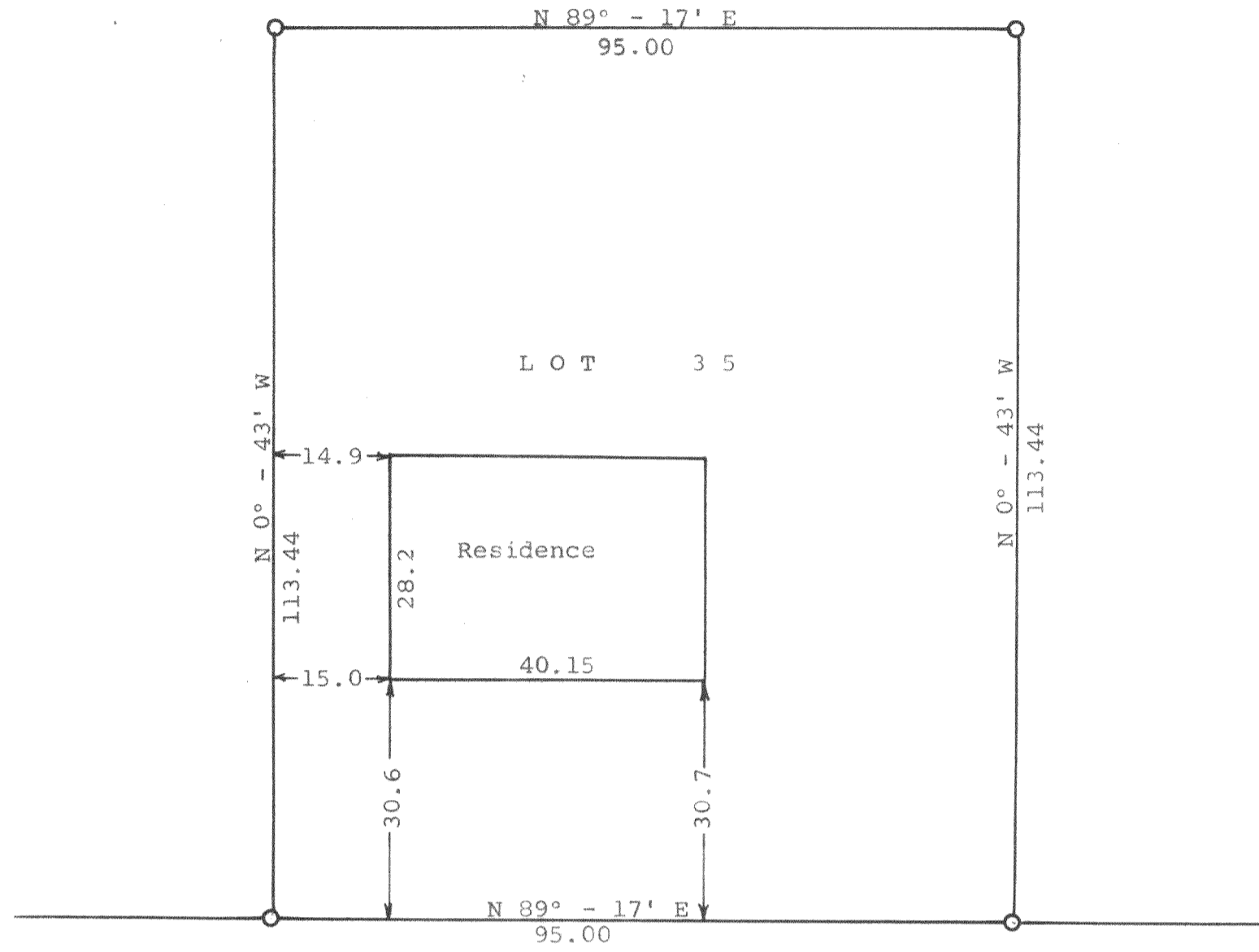


GEORGE T. DUNHAM  
 SURVEYING & SUBDIVIDING  
 DELAVAN, WISCONSIN



Scale - 1" = 20'  
 ○ = Iron Pipe



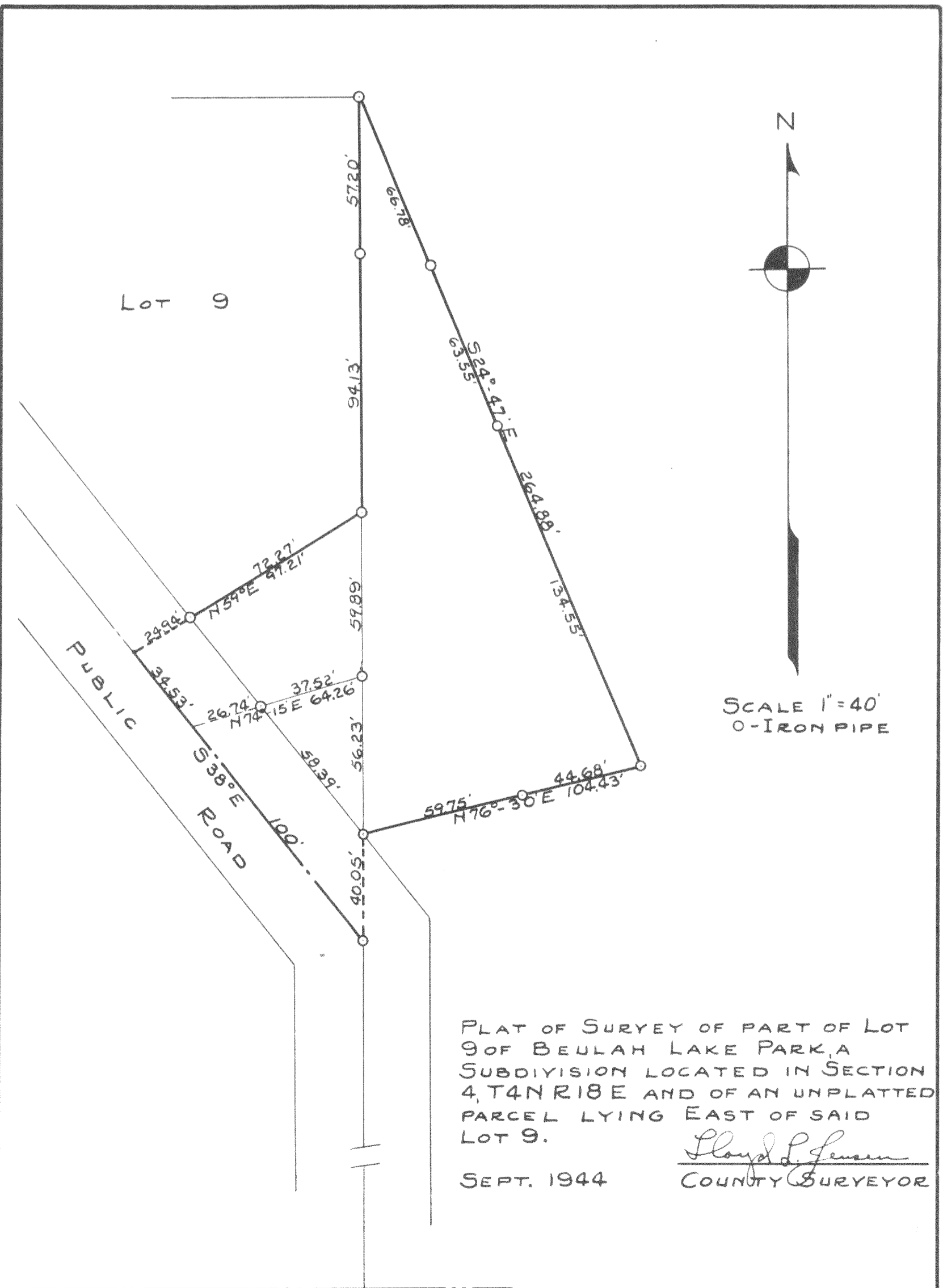
B R A S S I E

D R I V E

STATE OF WISCONSIN)  
 WALWORTH COUNTY ) SS

I, George T. Dunham, Surveyor, do certify that I have surveyed the property described as follows,  
 Lot 35 of Fairway Subdivision located in Section 4,  
 T 4 N R 18 E, Walworth County, Wisconsin.  
 and the above plat is an accurate survey and a true representation thereof and correctly shows the location of the buildings on said property and the correct measurements thereof.  
 December 7, 1964

*George T. Dunham*  
 George T. Dunham, Surveyor



SOUTH LINE OF SECTION 4 BL-9A + ET-4-15