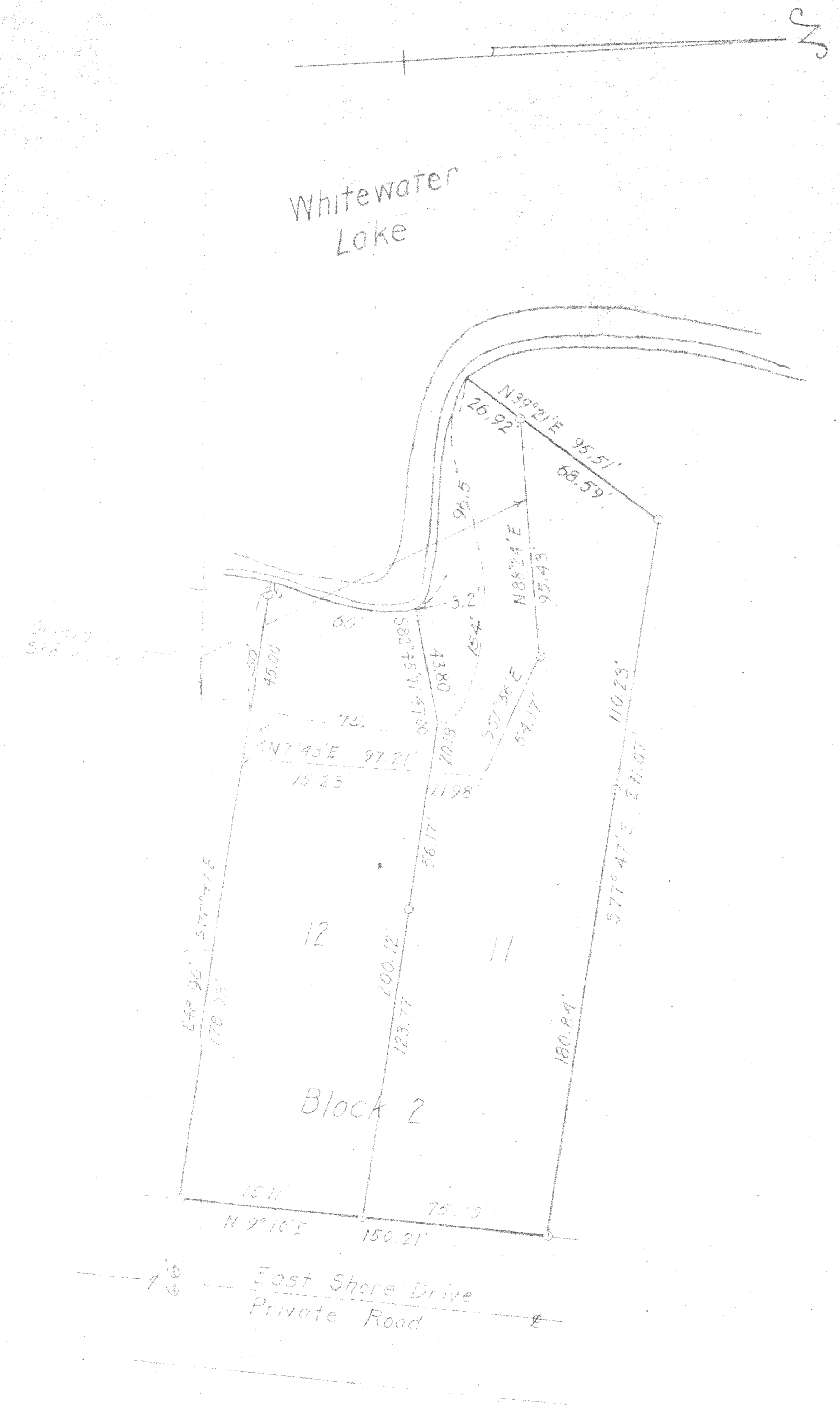
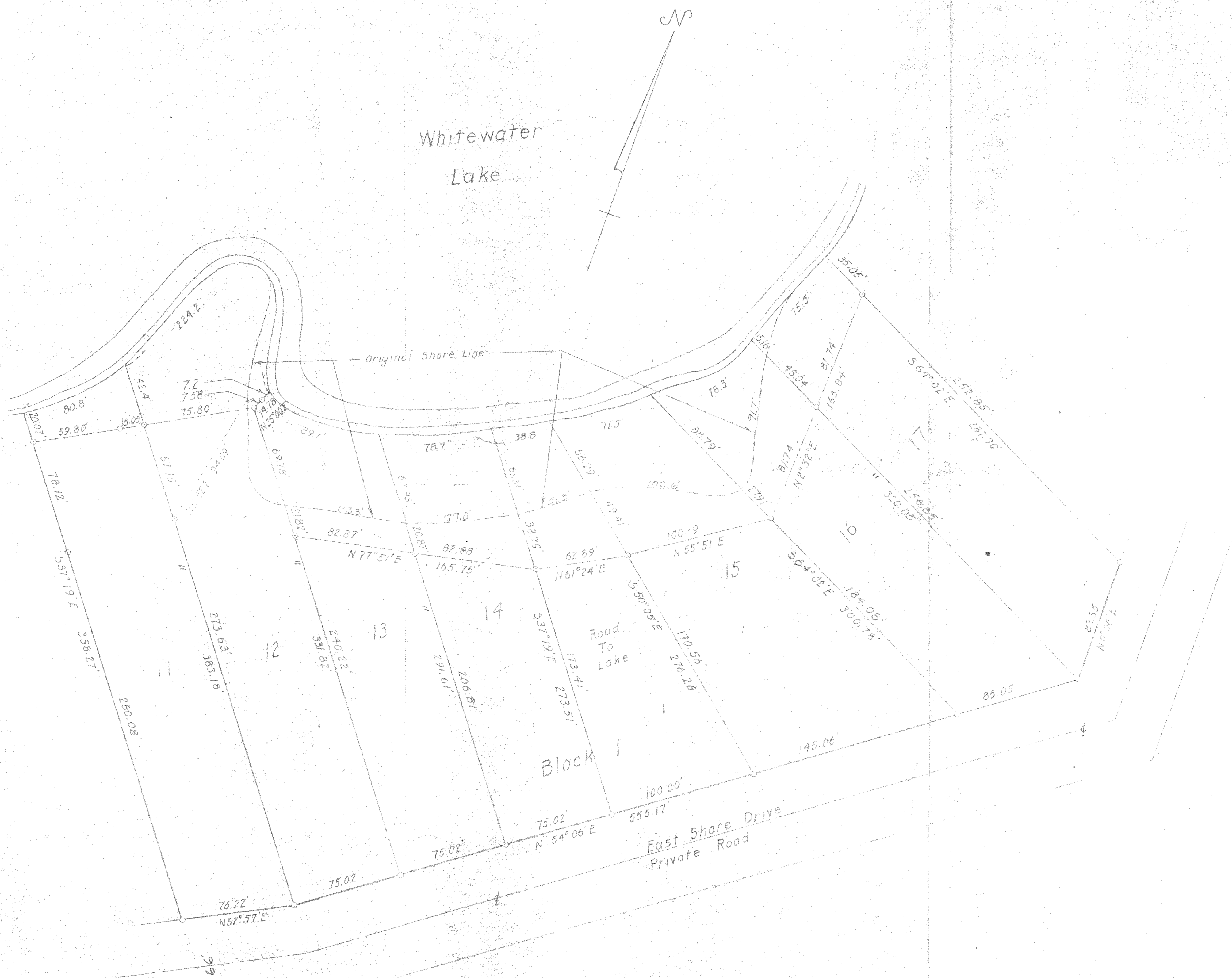


Plat of Survey of Lots 11, 17, Block 1, and Lots 11 & 12, Block 2, of Minnieska Subdivision, Located in Government Lots 1 and 2 of Section 35, T4N, R16E Walworth County, Wisconsin		
DRAWN BY JJ	JENSEN & JOHNSON CIVIL ENGINEERS ELKHORN, WIS. DATE: May, 1956	SCALE 1" = 40'
CHECKED BY David A. Jensen		REVISED
APPROVED BY		SHEET NO. OF

DM-11, 13, 14, 15, 16, 17, 34, 35

709/20



6" Iron Pipe

<p>Plat of Survey of Lots 11-17, Block 1 and Lots 11+12 Block 2 of Minnesko Subdivision, located in Government Lots 1 and 2 of Section 35, T4N, R15E Walworth County, Wisconsin</p>		
<p>DRAWN BY H.H.</p>	<p>JENSEN & JOHNSON CIVIL ENGINEERS ELKHORN, WIS. DATE Nov. 1956</p>	<p>SCALE: 1" = 40'</p>
<p>CHECKED BY Lloyd Jensen</p>		<p>REVISED</p>
<p>APPROVED BY</p>		<p>SHEET NO. OF</p>

DM-11, 13, 14, 15, 16, 17, 34, 35

Vol 209 v. 6

415-28, 1