

FROM W FILE B-7-324

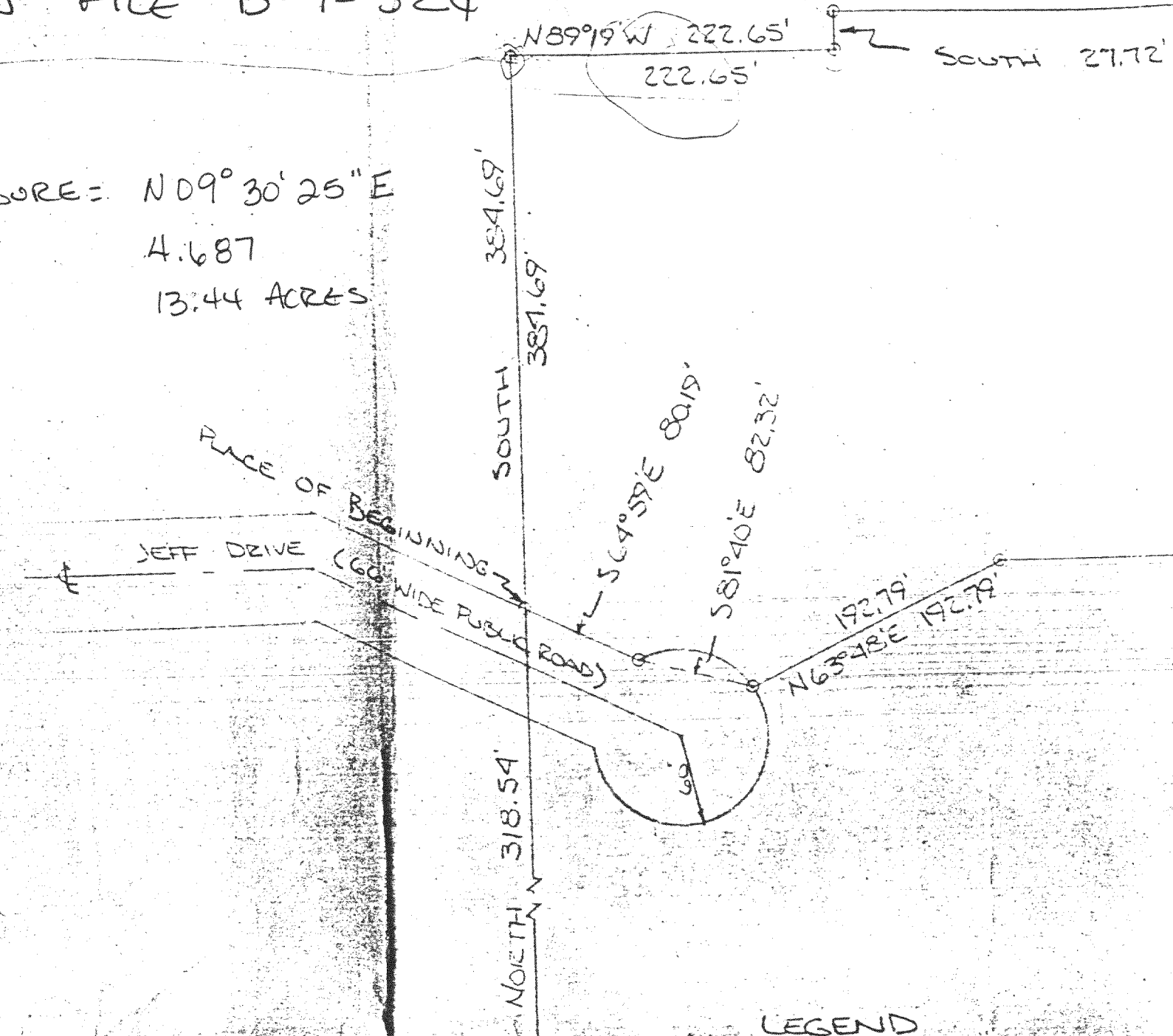
CLOSURE = N 09° 30' 25" E  
4.687  
13.44 ACRES

N 89° 19' W 1325.00

1325.00

13.5 ACRES ±

365.00  
N 00° 53' E 365.00



LEGEND

- INDICATES IRON PIPE
- INDICATES CONCRETE MONUMENT

DESCRIPTION:

Commencing at the SW corner of Section 12, T3N, R16E, Walworth County, Wisconsin; thence N 01° 12' 30" E 1857.38 feet, thence S 88° 13' E 2358.66 feet, thence North 318.54 feet to the Place of Beginning of the lands hereinafter described to-wit: thence S 64° 59' E 80.19 feet along the N 1/4 line of Jeff Drive, thence along a curve the chord of which is S 81° 40' E 82.32 feet, thence N 63° 48' E 192.79 feet, thence S 89° 44' E 1215.60 feet, thence N 00° 53' E 365.00 feet, thence N 89° 19' W 1325.00 feet, thence South 27.72 feet, thence N 89° 19' W 222.65 feet, thence South 384.69 feet to the Place of Beginning, containing 13.5 acres of land, more or less.

CERTIFICATE:

I, Joseph M. Biagi, Surveyor, do hereby certify that I have surveyed the lands herein described.

DATE:

SC 12-5A1

316-539

N 01° 12' 30" E  
1857.38  
SW COR.  
S 77° 12' 3-16  
20