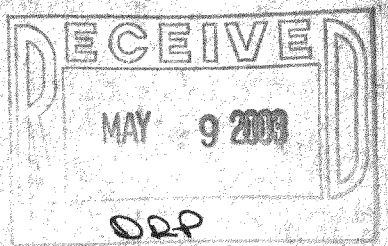
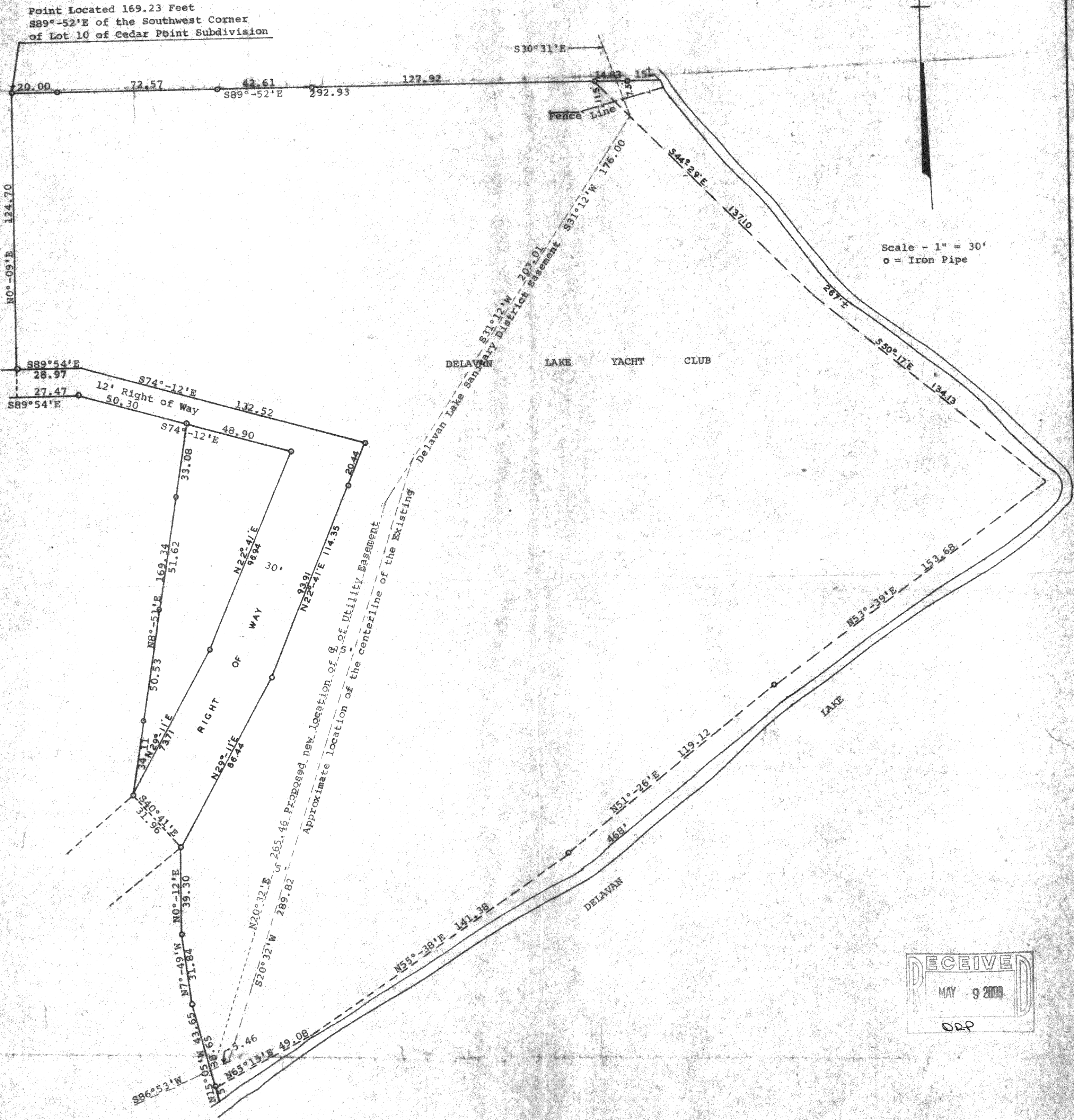


GEORGE T. DUNHAM  
SURVEYING & SUBDIVING  
DELAVAN, WISCONSIN



Scale - 1" = 30'  
o = Iron Pipe



Plat of survey of Part of Lot 9 of Cedar Point Subdivision located in the Northeast Fractional 1/4 of Section 28, T 2 N, R 16 E, Walworth County, Wisconsin.  
August 19, 1971  
Revised 2/27/73  
Revised Mar. 3, 1998 George T. Dunham, Surveyor to show revision of Utility easement location

