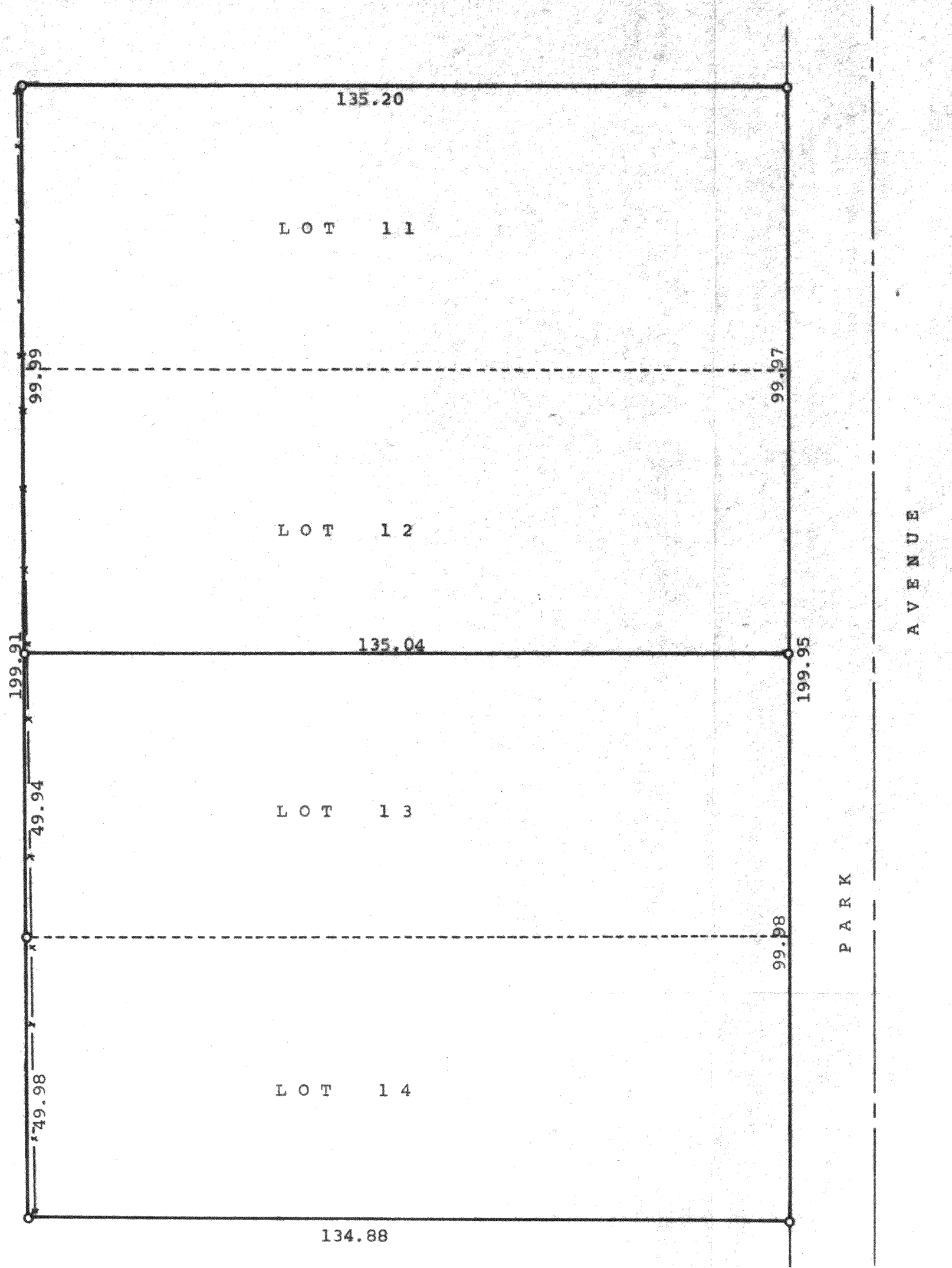


GEORGE T. DUNHAM  
SURVEYING & SUBDIVIDING  
DELAVAN, WISCONSIN



N  
Scale - 1" = 20'  
o = Iron Pipe  
-x-x- = Fence line

Plat of survey of Lots 11-14 inclusive, Block A  
of Maple Hurst, a subdivision located in Section 32,  
T 2 N, R 16 E, Walworth County, Wisconsin.  
April 19, 1974  
Revised June 15, 1978

*George T. Dunham*  
George T. Dunham, Surveyor

