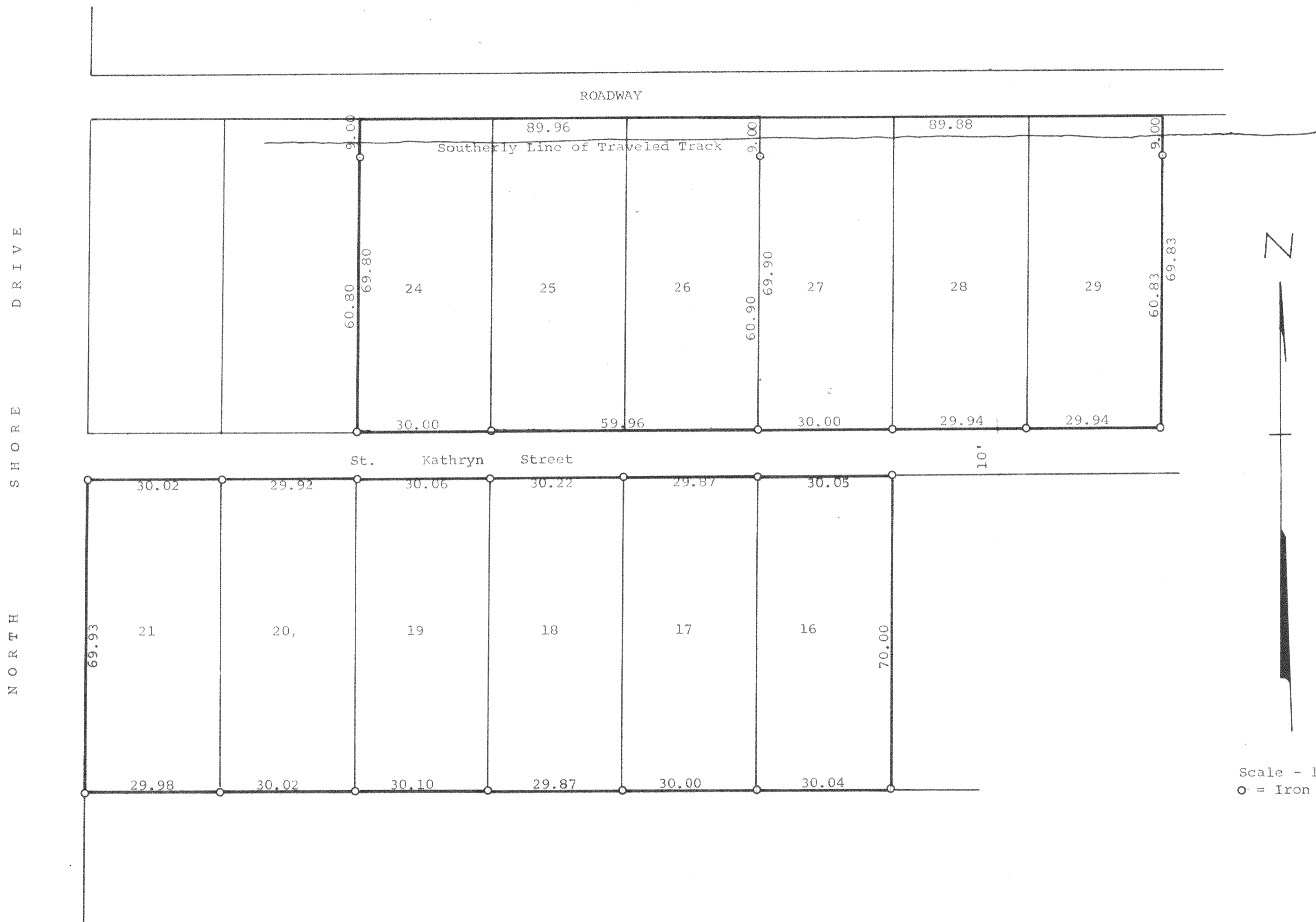


GEORGE T. DUNHAM
 SURVEYING & SUBDIVIDING
 DELAVAN, WISCONSIN



N

Scale - 1" = 20'
 O = Iron Pipe

Plat of survey of Lots 16-21 inclusive and Lots 24-29 inclusive of The Fleming Addition located in Section 28, T 2 N, R 16 E, Walworth County, Wisconsin. January 13, 1969

George T. Dunham
 George T. Dunham, Surveyor

216-279

Put in line of

FFA-7A, 8A