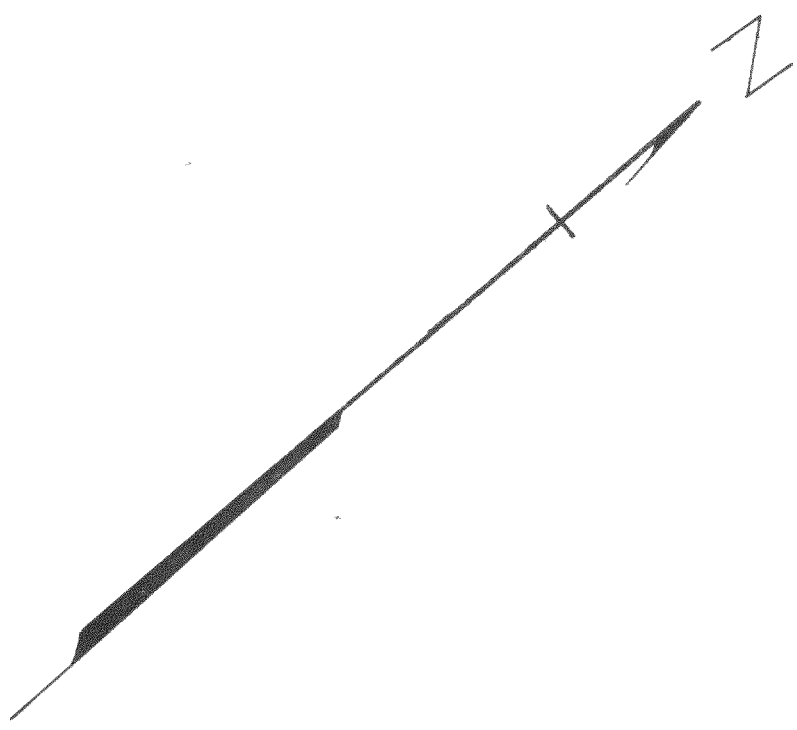


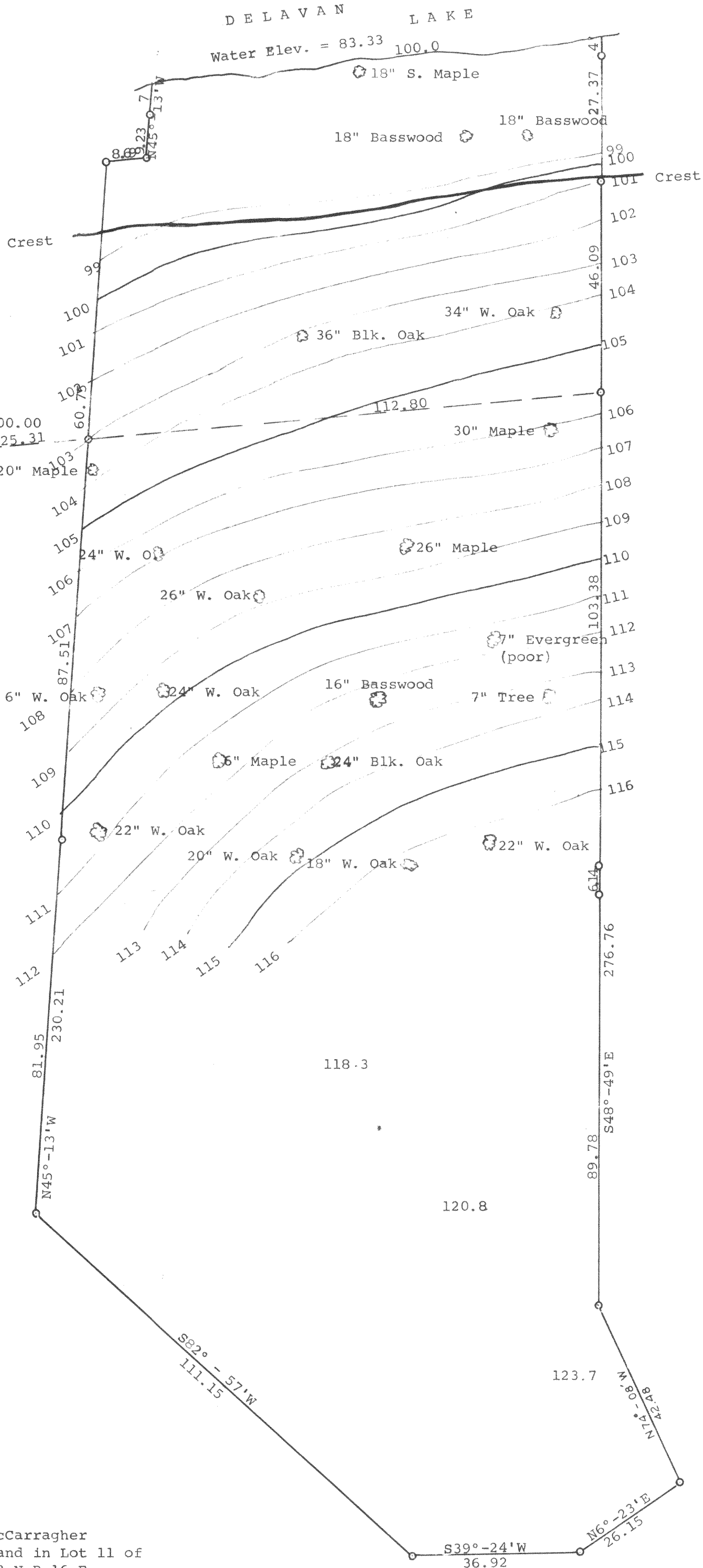
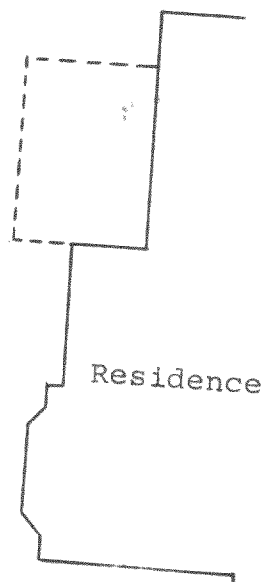
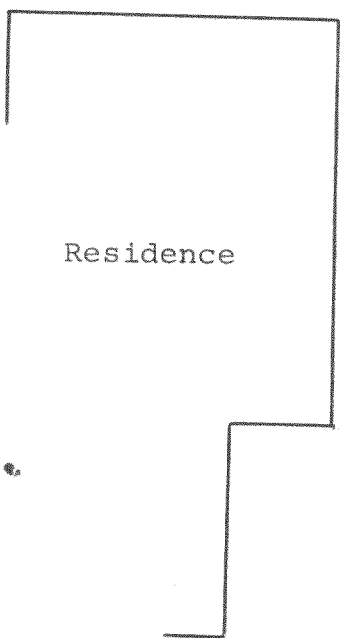
GEORGE T. DUNHAM  
SURVEYING & SUBDIVIDING  
DELAVAN, WISCONSIN

DELAVAN LAKE  
Water Elev. = 83.33 100.0



Scale - 1" = 20'  
○ = Iron Pipe  
● = Concrete Monument

Bench Mark - Top of Concrete Monument. Assumed Elev. = 100.00



Topographic Map of part of the land owned by John McCarragher located in Lot 1 of Abbott and Robbins Subdivision and in Lot 11 of Shady Side Park Subdivision, Sections 28 and 33, T 2 N R 16 E, Walworth County, Wisconsin.  
March 24, 1964

*George T. Dunham*  
George T. Dunham, Surveyor

128.4

FAR 18  
+  
on FSH-6