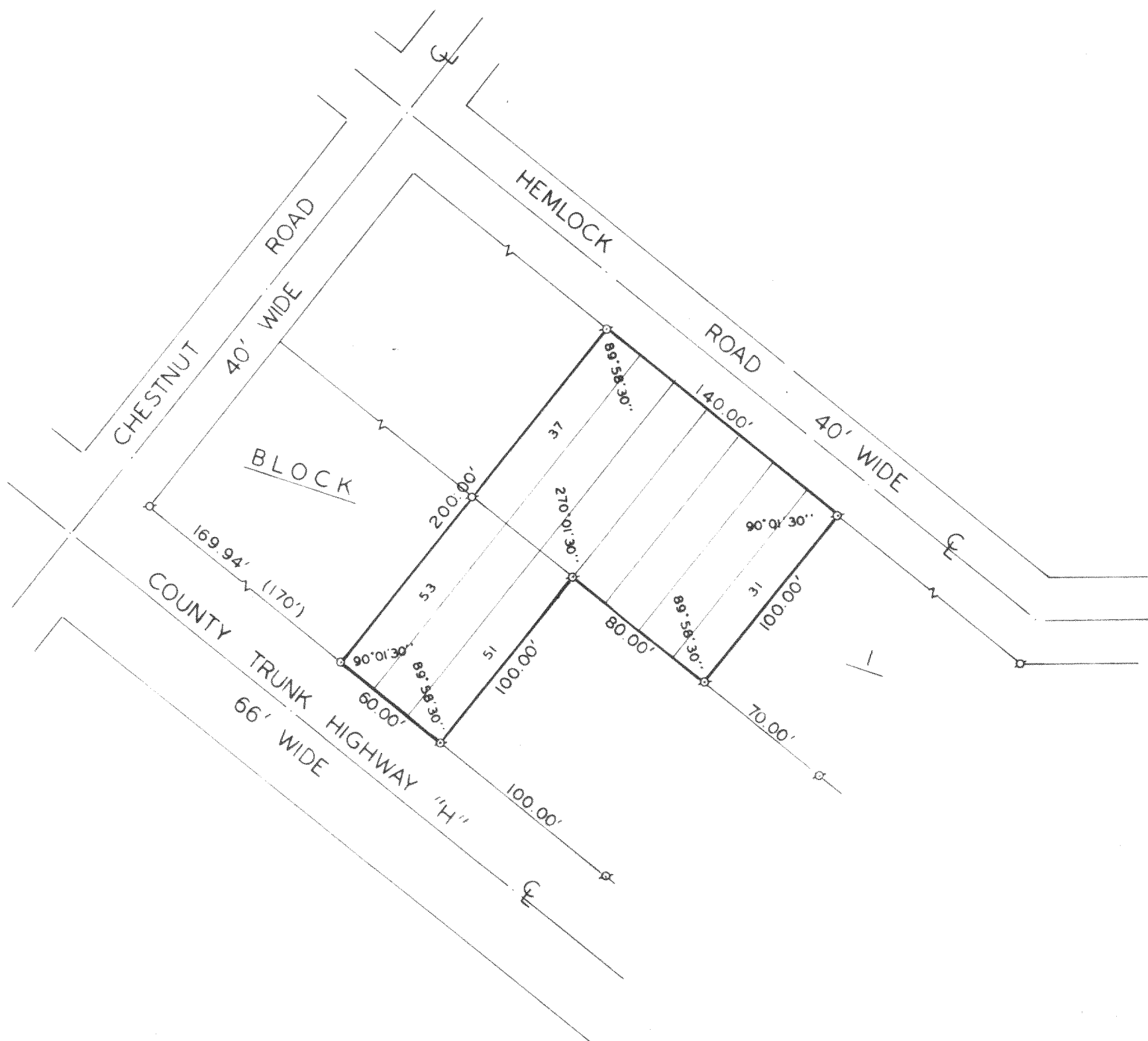


# HAROLD H. KOLB

REGISTERED PROFESSIONAL LAND SURVEYOR  
LAKE GENEVA, WISCONSIN



## PLAT OF SURVEY OF

LOTS 31-37 AND LOTS 51-53, BLOCK 1,  
PELL LAKE SUBDIVISION, SECTION 1, T1N,  
R18E, WALWORTH COUNTY, WISCONSIN.

ORDERED BY: W. E. KINDER

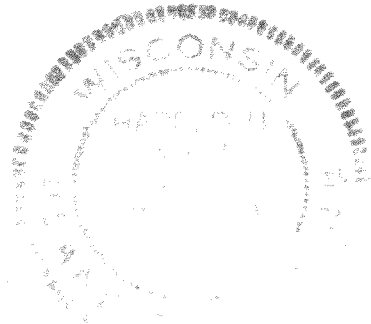
ACCURACY: DISTANCES  $\pm 0.01'$   
ANGLES  $\pm 05''$   
ERROR OF CLOSURE--  
LESS THAN ONE PART IN 3000



SCALE: 1" = 60'

### LEGEND

- φ — IRON PIPE FOUND
- — IRON PIPE PLACED
- — CONCRETE MONUMENT
- x — SPIKE
- () — AS PLATTED



I, HAROLD H. KOLB, DO HEREBY CERTIFY THAT I HAVE  
SURVEYED THE PROPERTY HEREON DESCRIBED ACCORDING  
TO THE OFFICIAL RECORDS, AND THAT THE PLAT HEREON  
IS A CORRECT REPRESENTATION OF THE LOT LINES.

*Harold H. Kolb*

HAROLD H. KOLB  
WISCONSIN REGISTERED LAND SURVEYOR, S-187  
DATE Sept 23, 1976

118-545