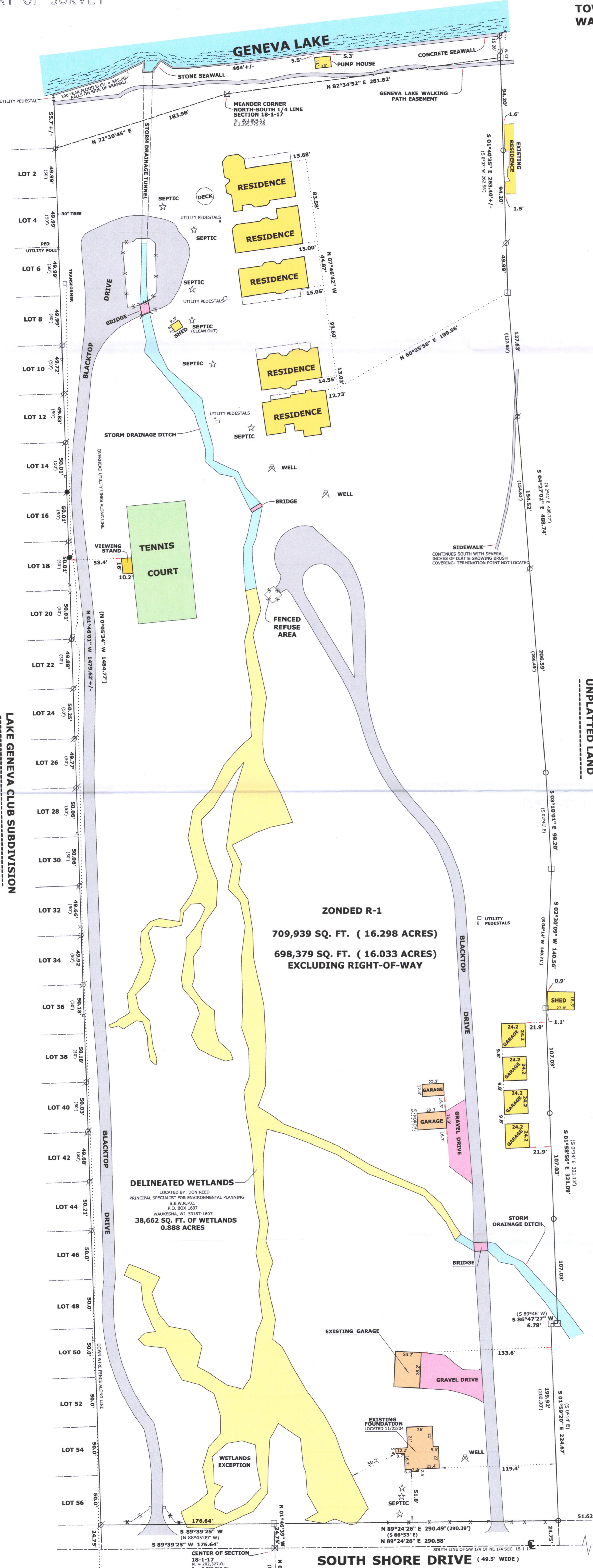


CHICAGO CLUB OF LAKE GENEVA CONDOMINIUMS,
LOCATED IN PART OF THE NORTH 1/2 OF SECTION 18,
TOWN 1 NORTH, RANGE 17 EAST, LINN TOWNSHIP,
WALWORTH COUNTY, WISCONSIN.

PLAT OF SURVEY



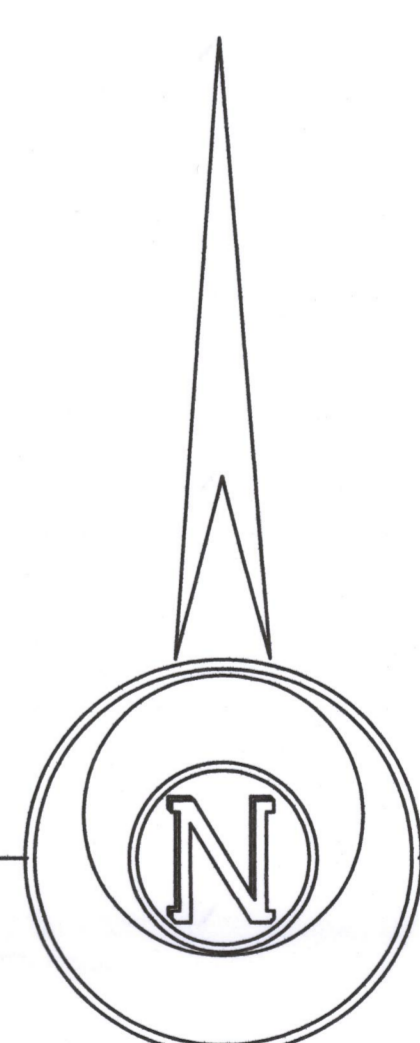
RESIDENCES DETAIL

SCALE: 1 INCH = 20 FEET



SURVEYOR'S NOTES

- SEE PREVIOUS PLAT OF SURVEY FOR LEGAL DESCRIPTION FOR THE DELINEATED WETLANDS BY MARK L. MIRITZ DATED OCT. 24, 2004.
- PREVIOUS SURVEY (NOTE 1) FOR THE WETLANDS INVENTORY WAS IN STATE PLANE COORDINATES WITH A TIE TO THE EAST 1/4 CORNER OF SECTION 18-1-17. THIS PLAT USED A 1/16 CORNER (NOT RECOGNIZED BY THE COUNTY) FOR THE CENTERLINE OF SOUTH SHORE DRIVE AND WAS VERIFIED BY FOUND MONUMENTS. THE BEARING OF THE SOUTH LINE OF THE NE 1/4 OF SEC. 18-1-17 IS N 89°30'42" E WITH THE 1/16 CORNER BEING 2.9' NORTH OF THE SECTION LINE.



Horizontal Datum is based on the Wisconsin State Plane Coordinate System Grid, South Zone, all bearings are referred to Grid North.

LEGEND

- FOUND IRON PIPE
- FOUND IRON ROD
- FOUND COUNTY MONUMENT
- FOUND CONCRETE MONUMENT
- CHISEL CUT IN CONCRETE
- SET IRON PIPE, 24" LONG, WEIGHING 1-13 LBS./LINEAL FT., 1 1/4" DIA.
- RECORDED AS DIMENSION
- BURIED ELECTRIC LINE MARKED BY OTHERS
- UTILITY POLE WITH OVERHEAD LINES

SCALE: 1" = 50 FEET

"I hereby certify that the above described property has been surveyed by me or under my direction and that the above map is a true representation thereof and shows the size and location of the property, its exterior boundaries, the location of all visible structures and dimensions of all principal buildings thereon, boundary fences, apparent easements, roadways and visible encroachments, if any."

Mark L. Miritz
WISCONSIN PROFESSIONAL
LAND SURVEYOR S-2582
DATE: DECEMBER 12, 2004 JOB NO. 04.1004

REVISED DEC. 9, 2022 TO SHOW UTILITIES ON WEST LINE
REVISED MAY 31, 2005 TO SHOW GARAGES AS BUILT
REVISED JAN. 7, 2005 TO SHOW PROPOSED GARAGES

IL18-11 1011-5

117-4750