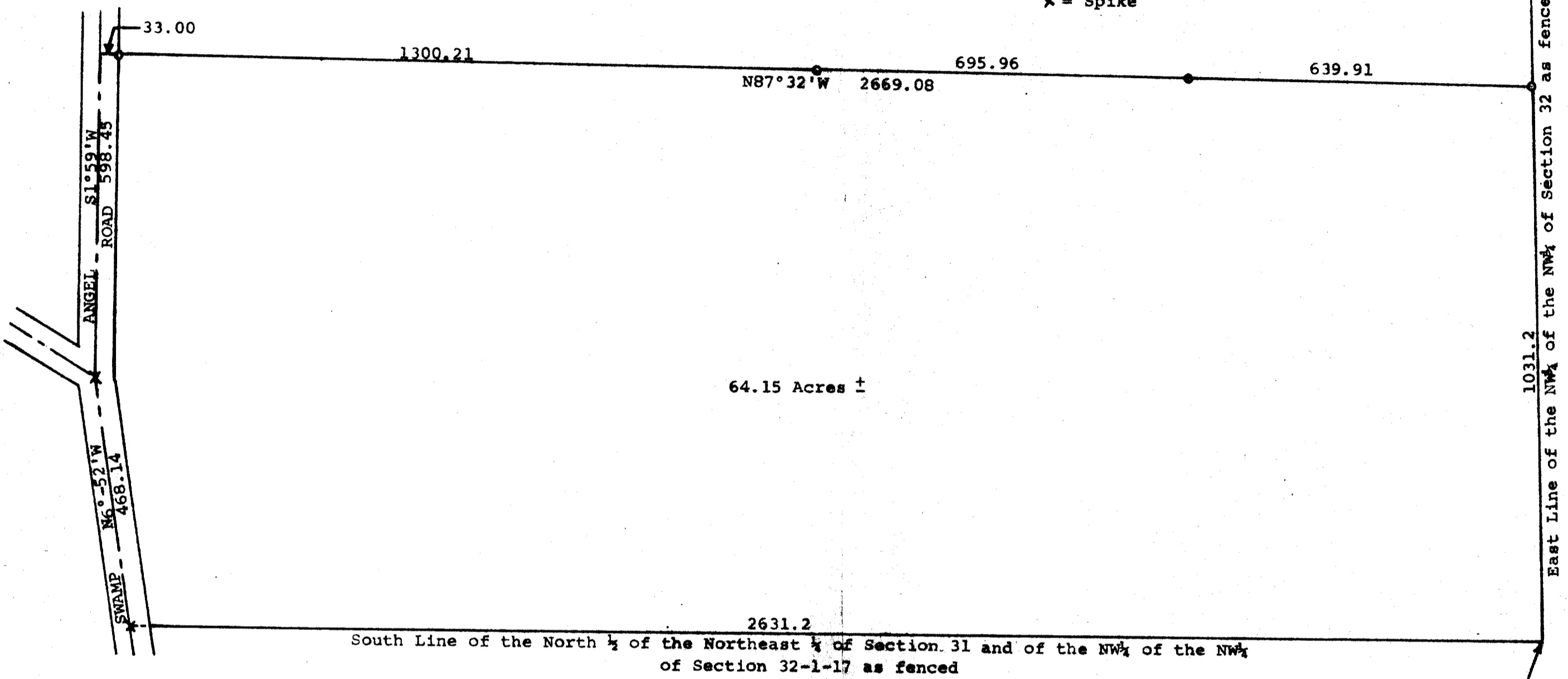


GEORGE T. DUNHAM
 SURVEYING & ENGINEERING
 DELAVAN, WISCONSIN



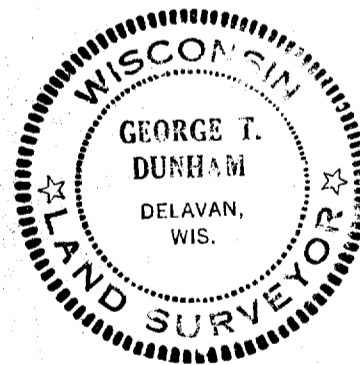
Scale - 1" = 200'
 O = Iron Pipe
 X = Spike



Fence Corner at the southeast corner of the Northwest 1/4 of the Northwest 1/4 of Section 32, T1N, R17E

Plat of survey of part of the North 1/2 of the Northeast 1/4 of Section 31, and of the NW 1/4 of the NW 1/4 of Section 32, T1N, R17E Walworth County, Wisconsin. August 3, 1972

George T. Dunham
 George T. Dunham, Surveyor



C.S 1498+ IC 32-4

L-31-1 L-32-4
 4 31-1B L-32-4A

117-217