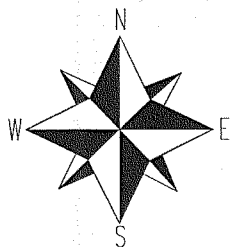
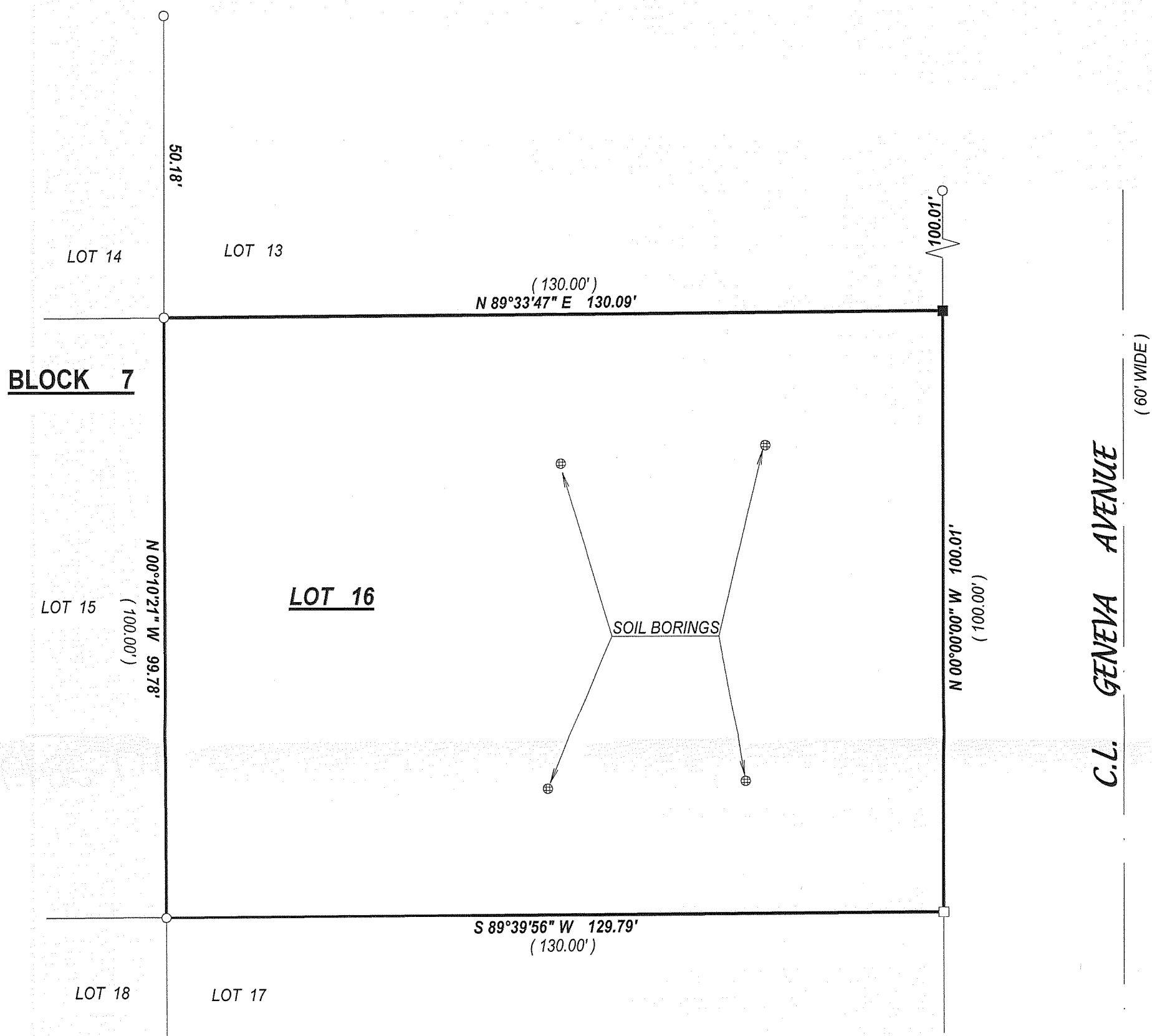


PLAT OF SURVEY

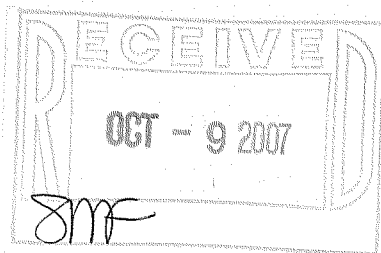
- OF -

PATHFINDER SURVEYING INC.
W2888 KRUEGER RD. UNIT "D"
LAKE GENEVA WI. 53147
(262) 248-3697



■ = set iron bar

TAX ID # ILGT00028



The seal is circular with a decorative, wavy outer border. Inside the border, the text "WISCONSIN" is at the top and "LAND SURVEYOR" is at the bottom, both following the curve of the circle. In the center, the text "JOHN P. KROTT" is on the first line, "S-2258" is on the second line, and "LAKE GENEVA WIS." is on the third line. Two five-pointed stars are positioned on the left and right sides of the central text, between the top and bottom curved text.

DATED THIS THE 4th DAY OF JUNE 2007.

117 - 2849