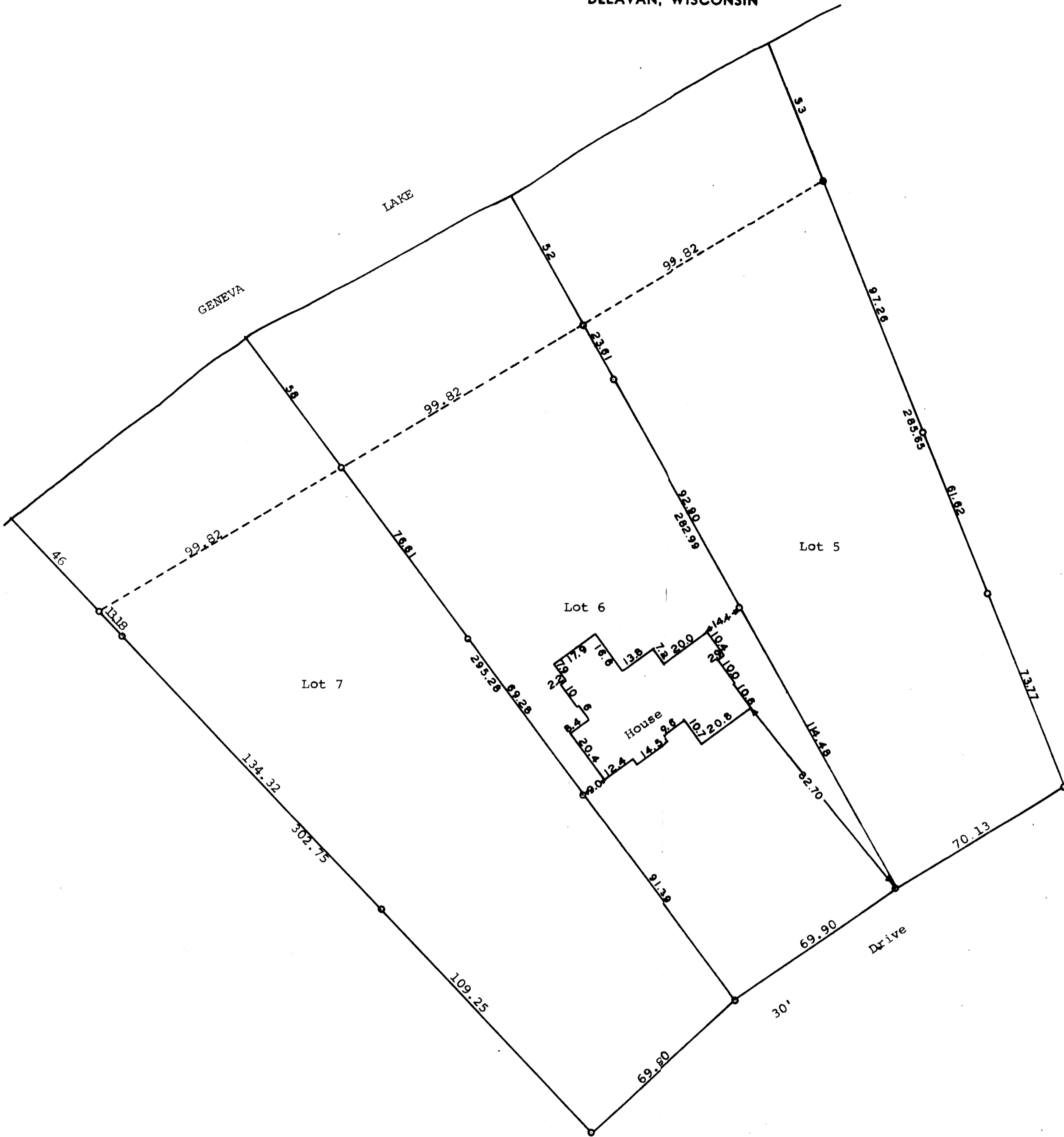


GEORGE T. DUNHAM  
SURVEYING & SUBDIVIDING  
DELAVAN, WISCONSIN



Scale - 1" = 30'  
○ = Iron Pipe  
● = Concrete Monument

STATE OF WISCONSIN)  
COUNTY OF WALWORTH) SS

I, George T. Dunham, Surveyor, certify that I have surveyed the property described as follows,

Lots 5, 6, and 7, The Birches First Addition located in Section 9, T 1 N, R 17 E, Walworth County, Wisconsin,

and that the plat shown above is an accurate survey and a true representation thereof and correctly shows the exterior boundary lines and location of buildings on said property and the correct measurements thereof.  
October 10, 1973

*George T. Dunham*  
George T. Dunham, Surveyor

