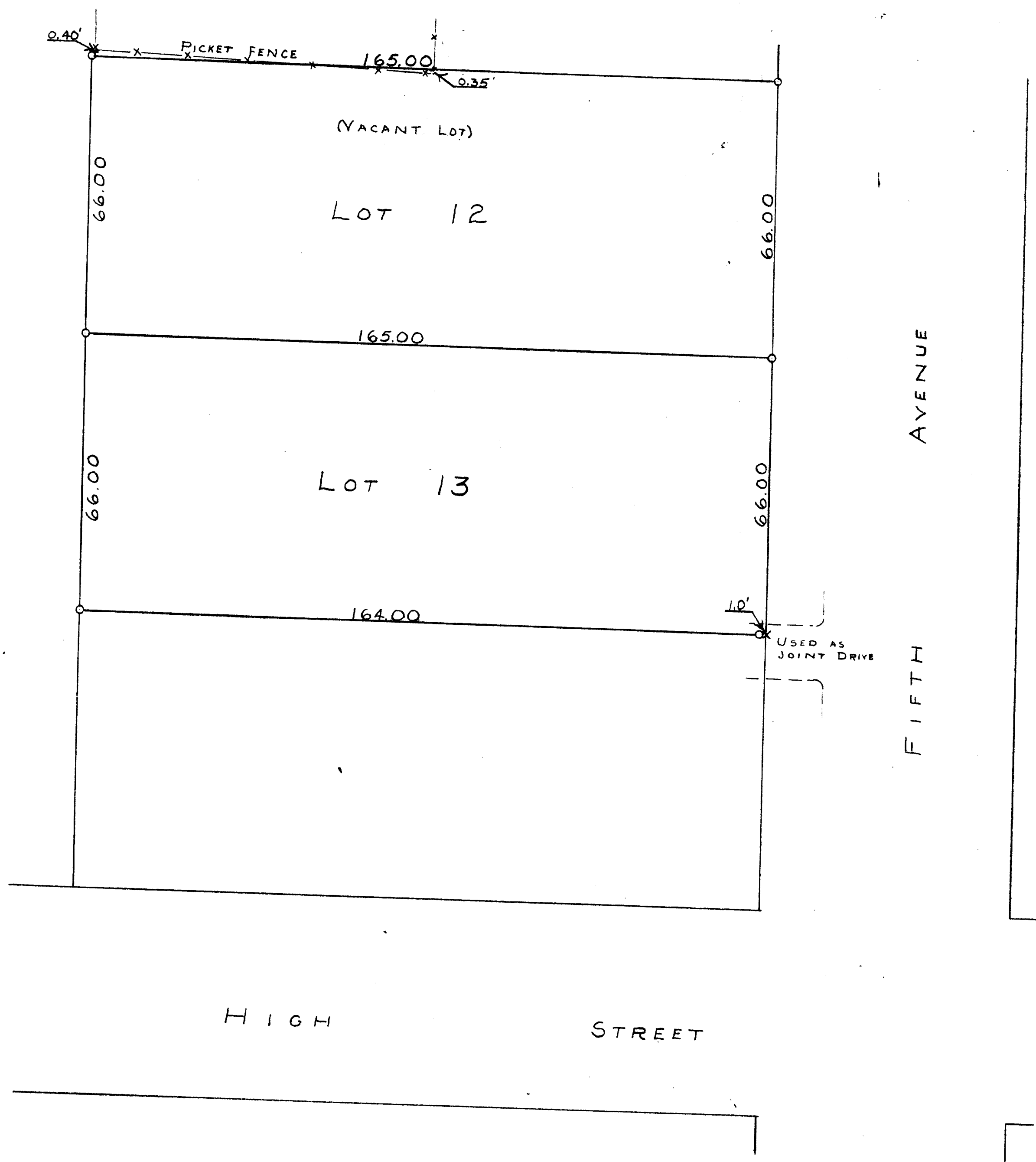


N



SCALE - 1" = 20'
O = IRON PIPE
X = CROSS IN CONC.



PLAT OF SURVEY OF LOTS 12 AND 13 IN BLOCK 1 OF
E. W. CRUMBS ADDITION TO THE VILLAGE OF WALWORTH,
WALWORTH COUNTY, WISCONSIN
AUGUST 11, 1954

George T. Dunham
GEORGE T. DUNHAM, SURVEYOR
DELAN, WISCONSIN