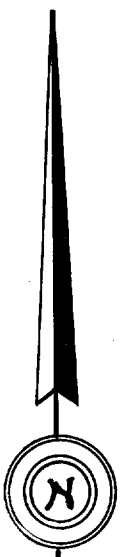
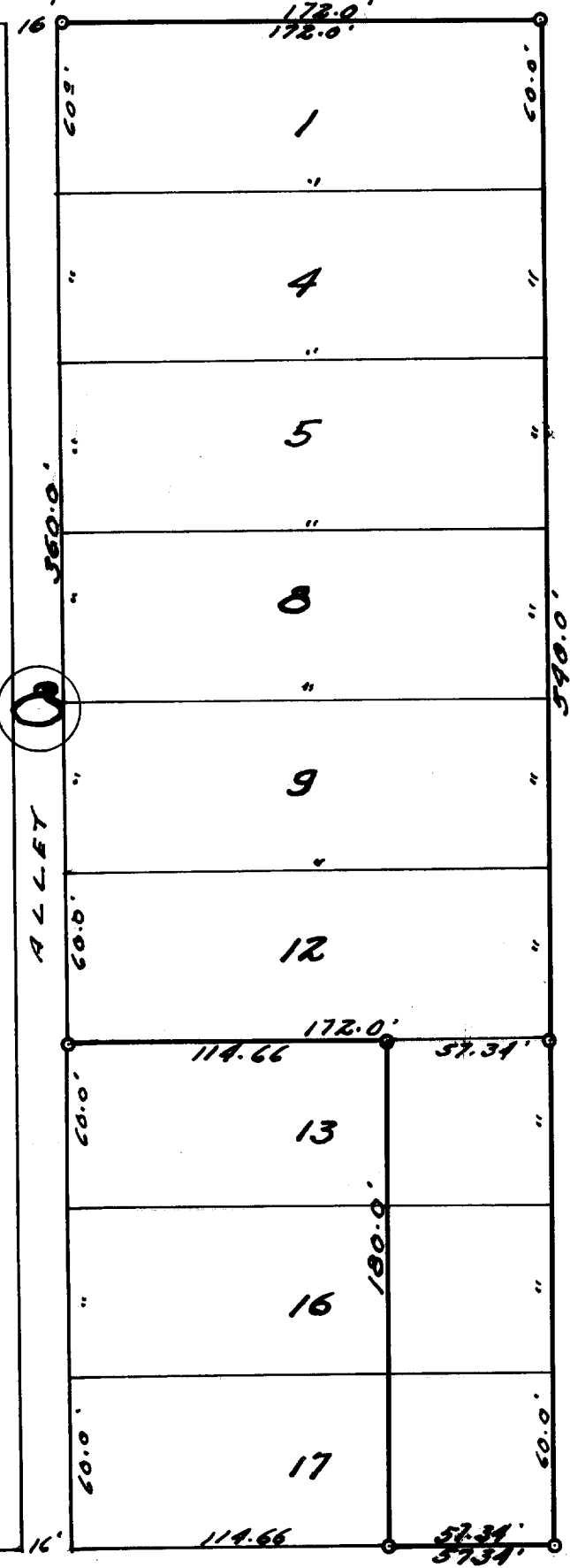


GROVE ST.



Iron Stakes



CRAWFORD AVE.

SPRING ST.

DESCRIPTION: The east 57.34 feet of Lots 13, 16 & 17 Block 8 Geneva Lake Crawford Manufacturing Company Addition to the Village of (now city of) Lake Geneva Walworth County Wisconsin, also Lots 1, 4, 5, 8, 9, & 12 Block 8 in said Geneva Lake Crawford Manufacturing Company Addition.

CERTIFICATE: I, hereby certify that I have surveyed on this the 28th day of July 1953, and find that no encroachments exist.

SIGNED AND SEALED ON THIS THE 4TH DAY OF AUGUST 1953.

*Joseph M. Biagi*  
Joseph M. Biagi. Professional Engineer.  
Elkhorn Wisconsin.