

PLAT OF SURVEY

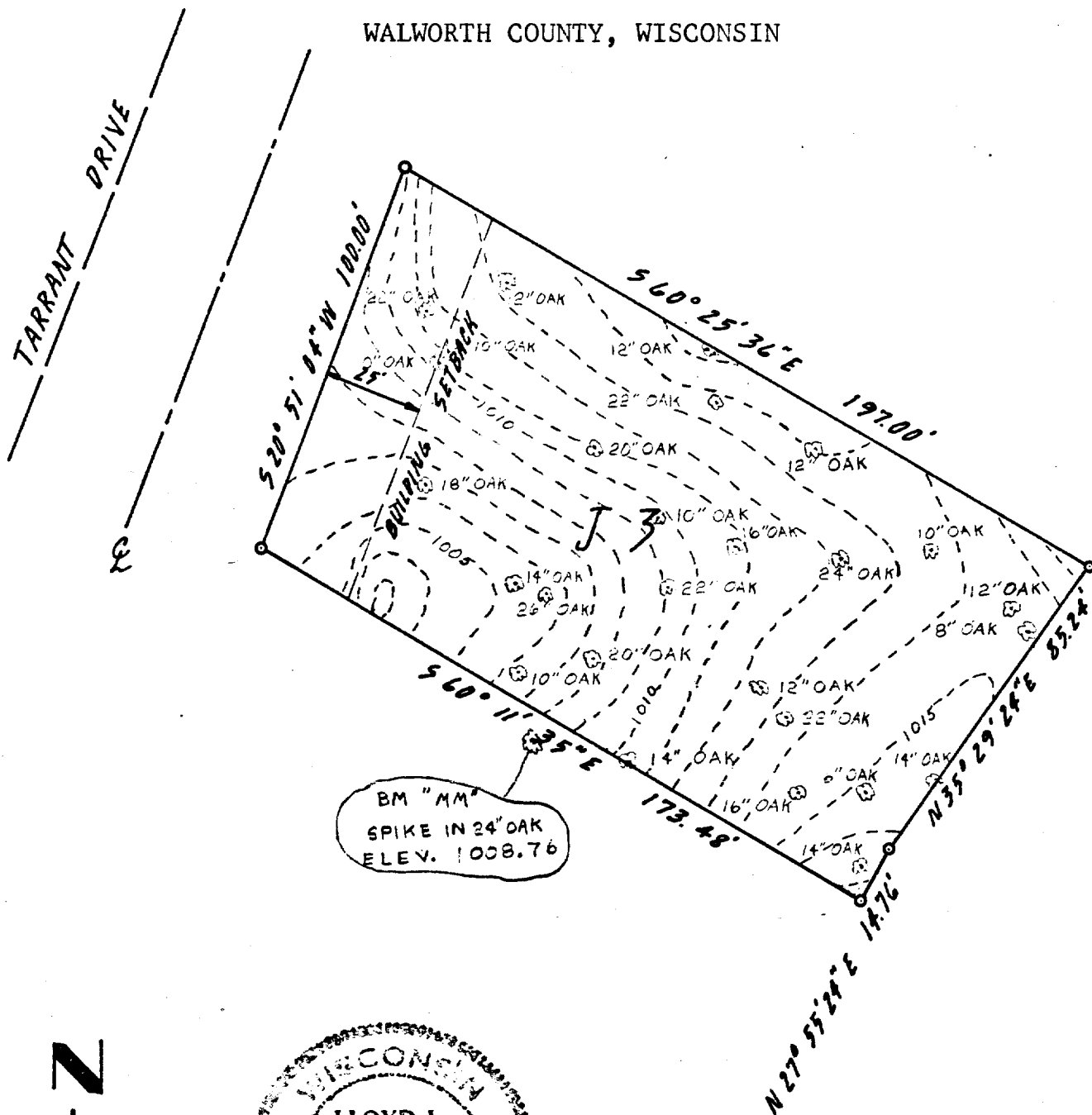
OF

LOT J3 OF

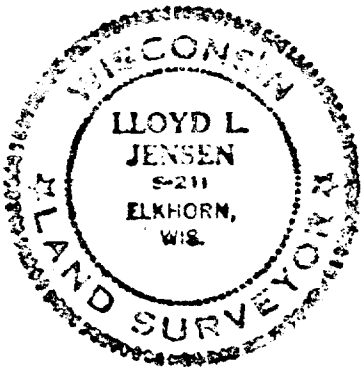
COUNTRY CLUB ESTATES

ADDITION "J"; FONTANA-ON-GENEVA LAKE

WALWORTH COUNTY, WISCONSIN



BM "MM"
SPIKE IN 24" OAK
ELEV. 1008.76



SURVEY AND PLAT BY

JENSEN & JOHNSON, INC.

CIVIL ENGINEERS AND SURVEYORS

Elkhorn, Wisconsin

LEGEND

- — Iron Pipe
- — Concrete Monument

Scale 1" = 40'

WE CERTIFY: That we have surveyed the above described property and that the plat shown hereon is an accurate survey and a true representation thereof and correctly shows the exterior boundary lines and all divisions of said property.

Date MAY 1973

Lloyd L. Jensen
LLOYD L. JENSEN,

Wisconsin Registered Land Surveyor, No. S-211

SGTJ-3