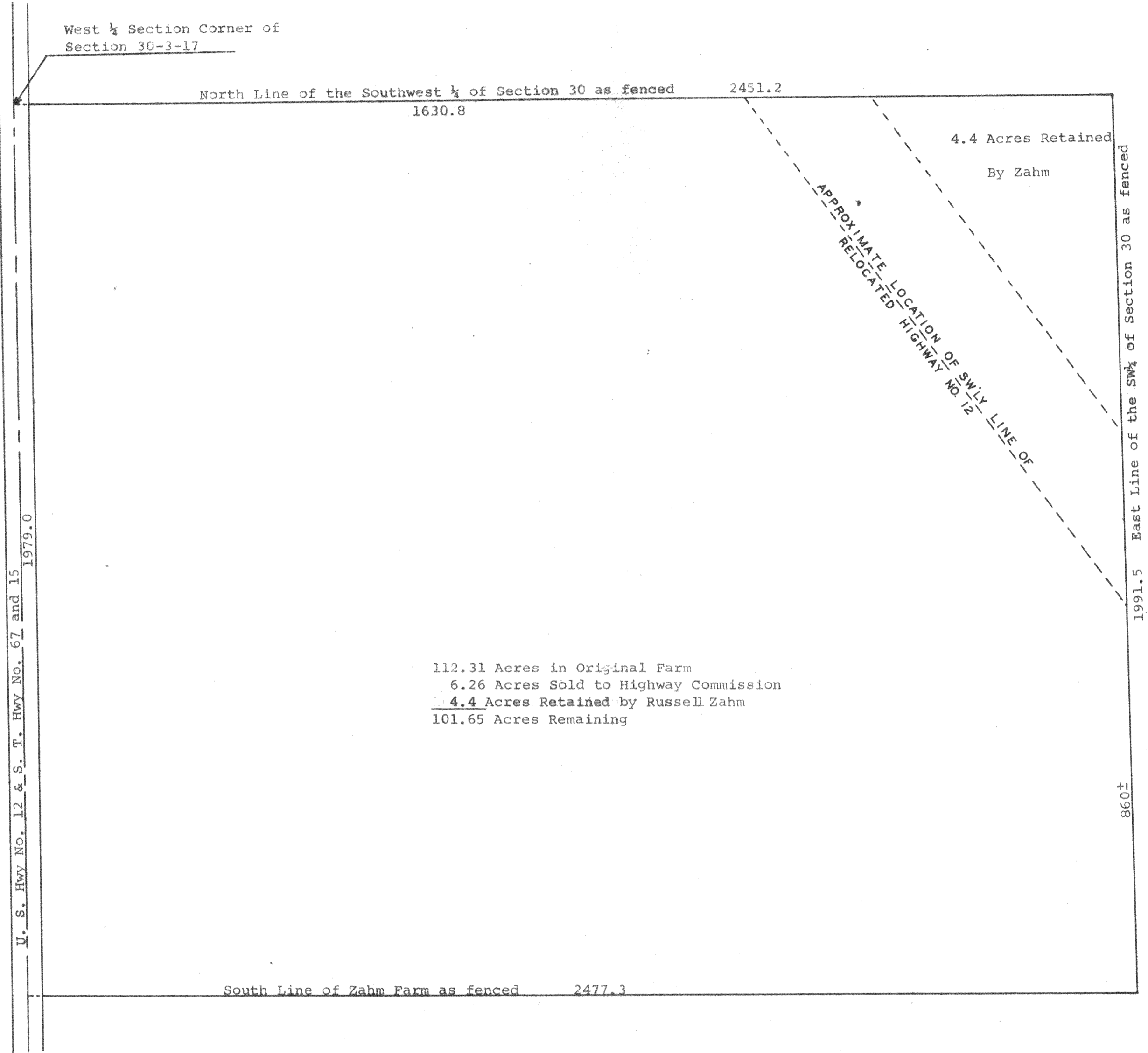


GEORGE T. DUNHAM  
 SURVEYING & SUBDIVIDING  
 DELAVAN, WISCONSIN



112.31 Acres in Original Farm  
 6.26 Acres Sold to Highway Commission  
 4.4 Acres Retained by Russell Zahn  
 101.65 Acres Remaining



Scale - 1" = 200'

Plat of fence line survey of the Russell Zahn Farm located in the Southwest 1/4 of Section 30, T 3 N, R 17 E, Walworth County, Wisconsin. January 5, 1966

*George T. Dunham*  
 George T. Dunham, Surveyor