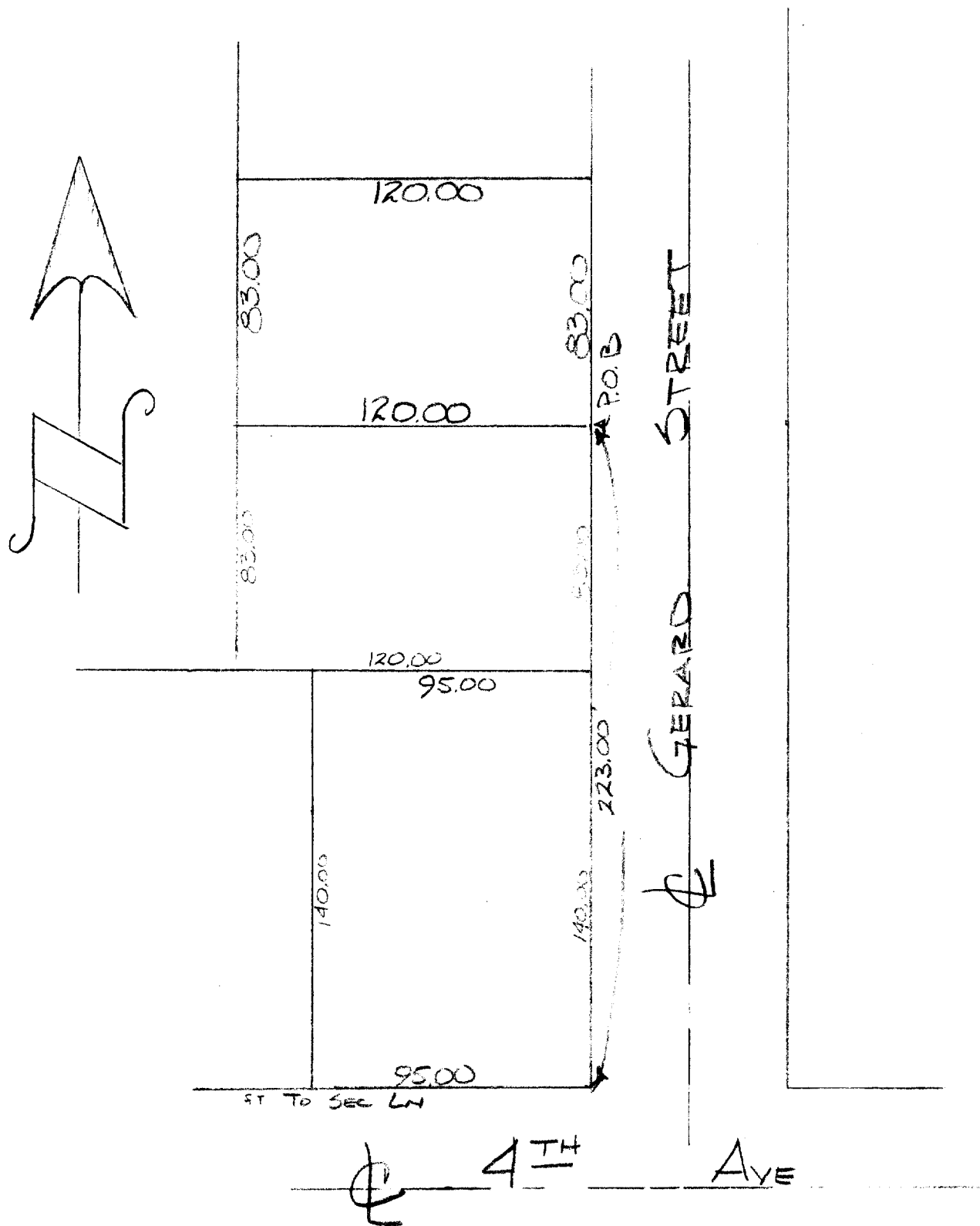


#234-62

4-236B



DESCRIPTION: COMMENCING AT THE NW CORNER OF THE NE 1/4 OF
 SEC. 36, T.3N., R.16E., CITY OF ELKHORN, WALKWORTH CO., WISC.; THENCE S 1°39'W
 ALONG THE WEST LN OF SAID NE 1/4, 576.38' TO A POINT, THENCE S 88°21'E
 271.30 FT, THENCE N 1°39'E 273.00 FT TO THE PLACE OF BEGINNING; THENCE
 N 88°21'W 120.00', THENCE N 1°39'E 83.00 FT, THENCE S 88°21'E
 120.00, THENCE S 1°39'W 83.00 FT TO THE P.O.B.
 U-NW-49, 50 + (part of U+NW 52)

4-236B