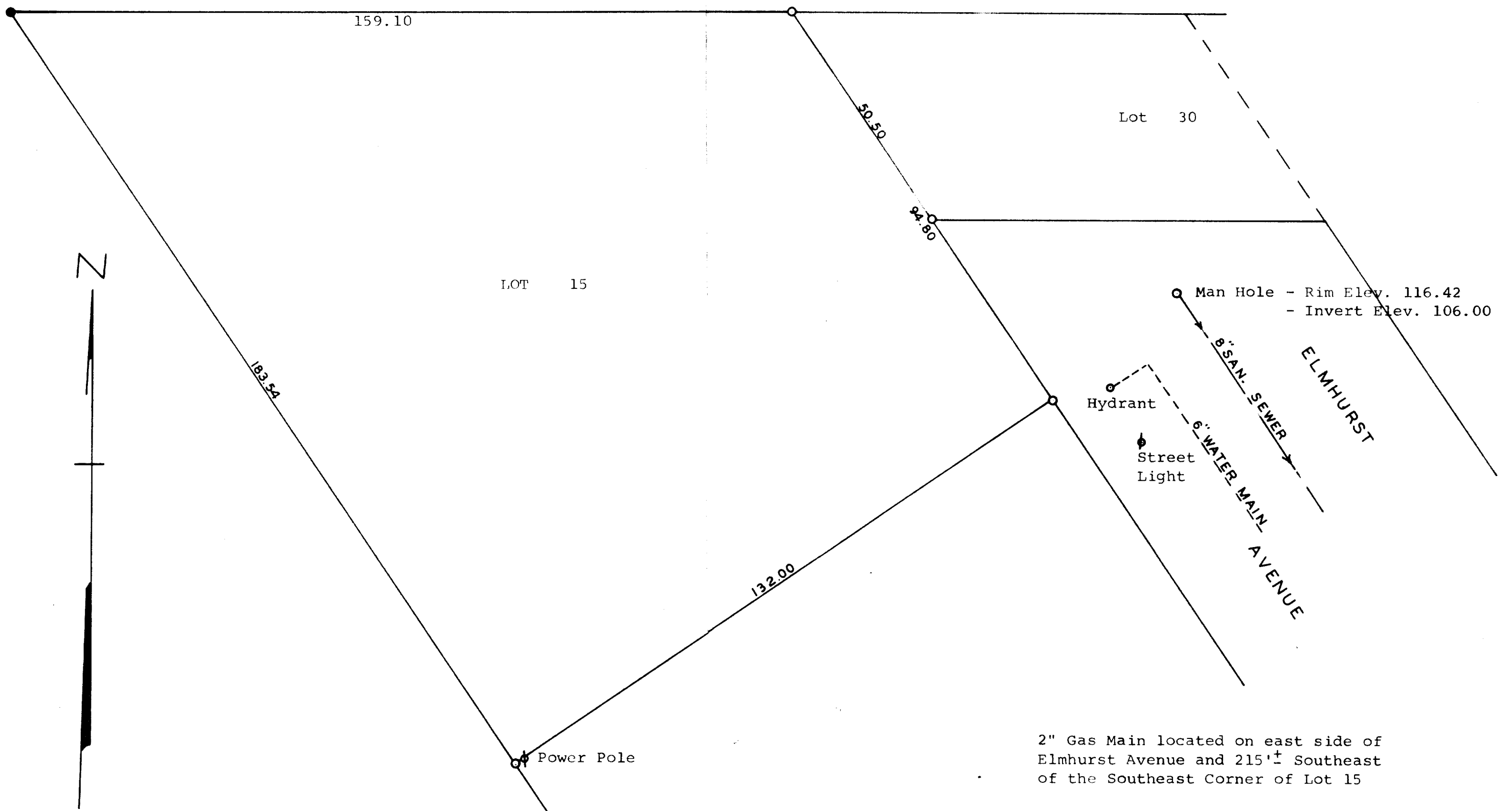


GEORGE T. DUNHAM
 SURVEYING & SUBDIVIDING
 DELAVAN, WISCONSIN



Scale - 1" = 20'
 ○ = Iron Pipe
 ● = Concrete Monument

Plat of survey of Lot 15 of Bennings Subdivision located
 in the City of Delavan, Walworth County, Wisconsin.
 July 10, 1971

George T. Dunham
 George T. Dunham, Surveyor

