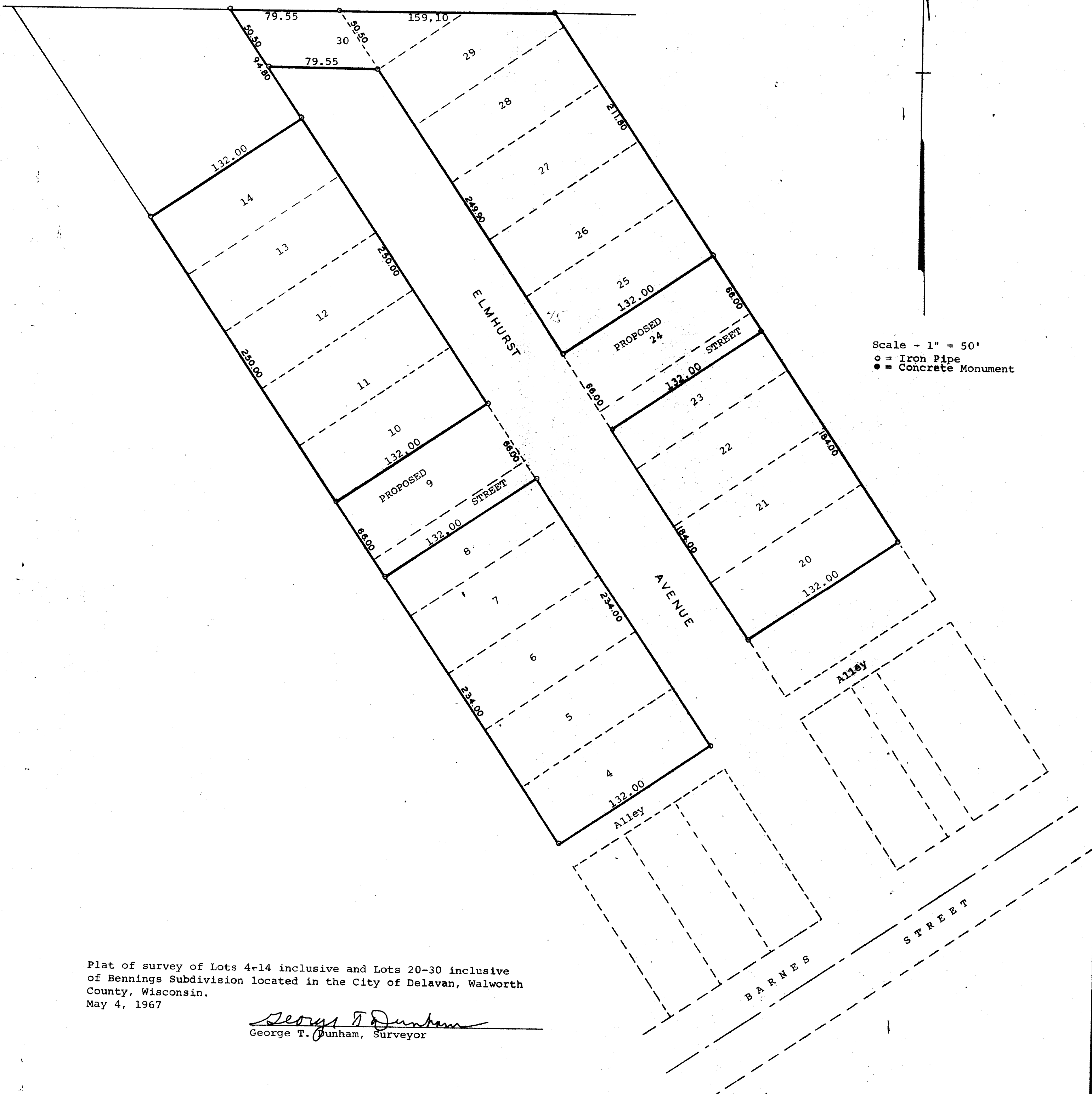


GEORGE T. DUNHAM
 SURVEYING & SUBDIVIDING
 DELAVAN, WISCONSIN

N



Scale - 1" = 50'
 ○ = Iron Pipe
 ● = Concrete Monument

Plat of survey of Lots 4-14 inclusive and Lots 20-30 inclusive
 of Bennings Subdivision located in the City of Delavan, Walworth
 County, Wisconsin.
 May 4, 1967

George T. Dunham
 George T. Dunham, Surveyor