

# PLAT OF SURVEY WITH TOPOGRAPHIC DATA

NW CORNER OF NE 1/4 OF SEC. 34-2-15 "AS SHOWN BY THE CENTERLINE OF THE CONCRETE PAVEMENT" GEORGE T. DUNHAM, JUNE 1, 1973 UNRECORDED PLAT OF 6 PARCELS.

FOUND CONC. MON. W/ CAP MARKING THE NW CORNER OF NE 1/4 SEC. 34-2-15

FOUND CONC. MON. W/ CAP NE CORNER OF NE 1/4 SEC. 34-2-15

KNOWN AS: 215 SHARON STREET, DARIEN, WISCONSIN

A PARCEL OF LAND LOCATED IN THE NORTHWEST 1/4 OF THE NORTHEAST 1/4 OF SECTION 34, TOWN 2 NORTH, RANGE 15 EAST, VILLAGE OF DARIEN, WALWORTH COUNTY, WISCONSIN, DESCRIBED AS FOLLOWS:  
THE SOUTH 50 FEET OF THE WEST 83 FEET OF THE NORTH 10 ACRES OF THE NORTHWEST 1/4 OF THE NORTHEAST 1/4 OF SECTION 34 T2N, R15E.

**NOTES:**

- BEARINGS ARE BASED ON THE NORTH LINE OF THE NORTHWEST 1/4 OF SECTION 34, TOWNSHIP 2 NORTH, RANGE 15 EAST, WHICH BEARS NORTH 87°35'14" EAST.
- ELEVATIONS ARE BASED ON NAV88, STARTING BENCHMARK, CONCRETE MONUMENT WITH BRASS CAP, CENTER OF SECTION 27, ELEV: 941.99'
- FIELD DATE: FEBRUARY 12, 2025

PREPARED FOR: VILLAGE OF DARIEN  
SURVEY NO: 169598-KAC

I CERTIFY, that this survey was prepared under my supervision and is correct to the best of my professional knowledge and belief and complies with Chapter A-E 7 of the Wisconsin Administrative Code.

Date: FEBRUARY 21, 2025

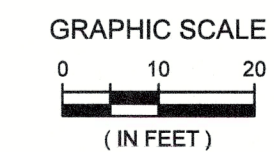


*Eric R. Sturm*

ERIC R. STURM  
WISCONSIN PROFESSIONAL LAND SURVEYOR S-2309

## LEGEND

- ⊙ SANITARY MANHOLE
- ⊕ SANITARY VENT
- ⊠ ELECTRIC METER
- ⊗ WATER VALVE
- ⊕ HYDRANT
- DECIDUOUS TREE
- s - SANITARY SEWER
- sto - STORM SEWER
- w - WATERMAIN
- g - MARKED GAS MAIN
- e - MARKED ELECTRIC
- ohw - OVERHEAD WIRES
- (p) - UTILITY PER PLAN
- 780— INDICATES EXISTING CONTOUR ELEVATION
- x 780.55 INDICATES EXISTING SPOT ELEVATION



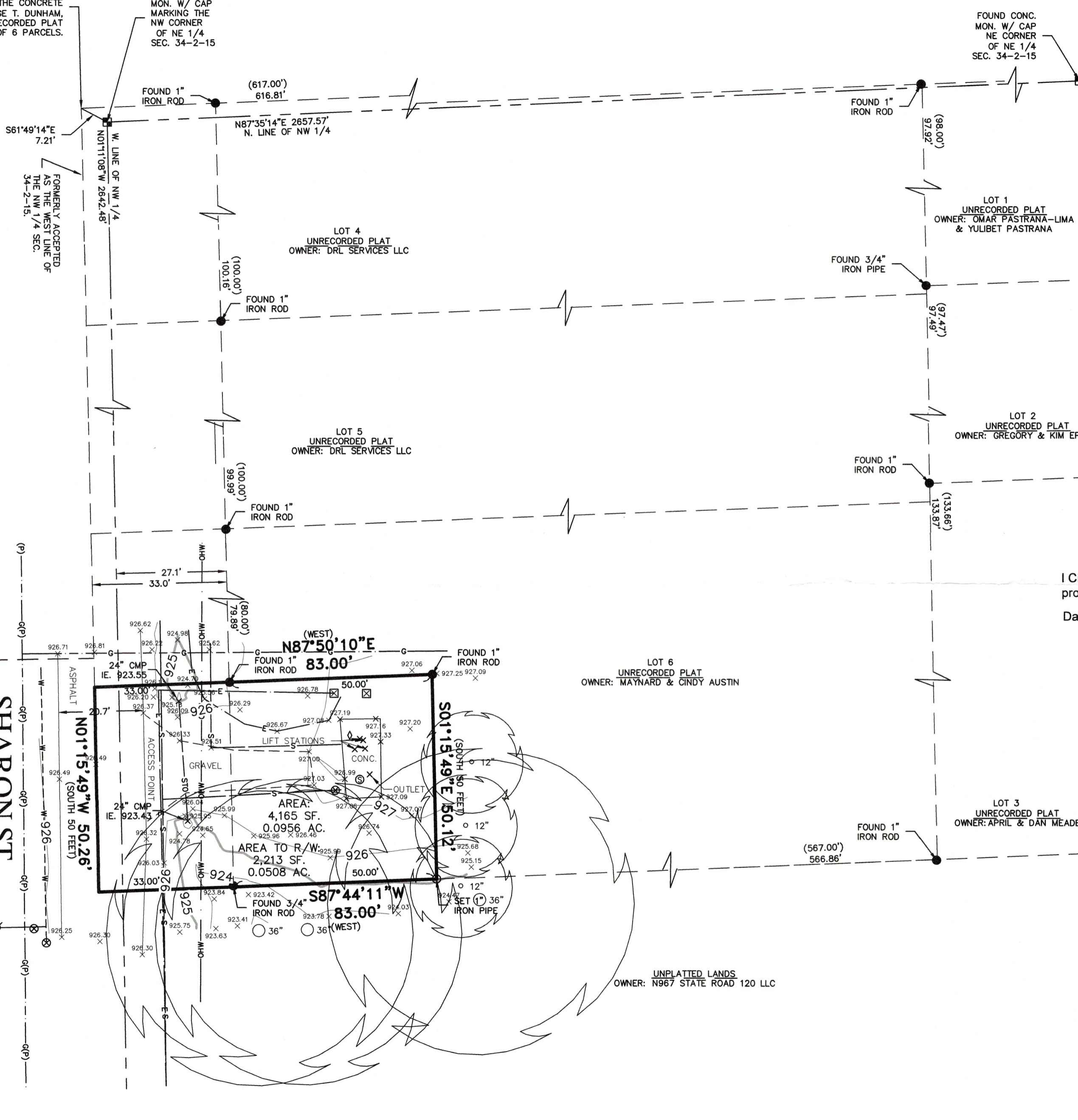
**raSmith**  
CREATIVITY BEYOND ENGINEERING

16745 W. Bluemound Road  
Brookfield, WI 53005-5938  
(262) 781-1000  
rasmith.com

S:\5163598\dwg\PS100-DARIEN LIFT.dwg, DARIEN LIFT STATION C, 2/25/2025 10:36:32 AM, ETS

DIGGERS HOTLINE

SHARON ST.



ASPHALT

SHARON ST.

SHARON ST.

SHARON ST.

SHARON ST.

SHARON ST.

SHARON ST.

SHARON ST.

SHARON ST.

SHARON ST.

SHARON ST.

SHARON ST.

SHARON ST.

SHARON ST.

SHARON ST.

SHARON ST.

SHARON ST.

SHARON ST.

SHARON ST.

SHARON ST.

SHARON ST.

SHARON ST.

SHARON ST.

SHARON ST.

SHARON ST.

SHARON ST.

SHARON ST.

SHARON ST.

SHARON ST.

SHARON ST.

SHARON ST.

SHARON ST.

SHARON ST.

SHARON ST.

SHARON ST.

SHARON ST.

SHARON ST.

SHARON ST.

SHARON ST.

SHARON ST.

SHARON ST.

SHARON ST.