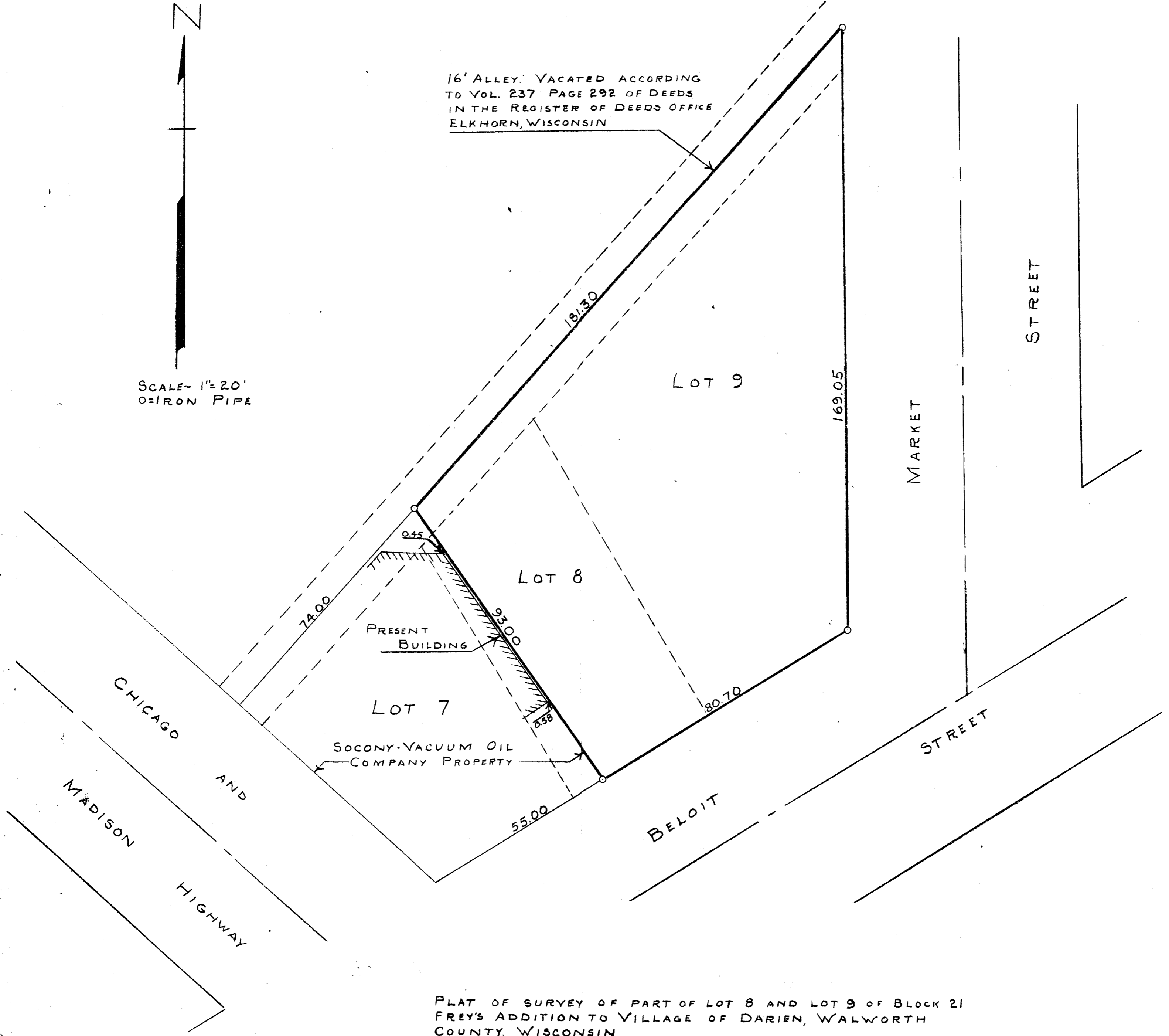




SCALE - 1" = 20'
O = IRON PIPE

16' ALLEY VACATED ACCORDING
TO VOL. 237 PAGE 292 OF DEEDS
IN THE REGISTER OF DEEDS OFFICE
ELKHORN, WISCONSIN



PLAT OF SURVEY OF PART OF LOT 8 AND LOT 9 OF BLOCK 21
FREY'S ADDITION TO VILLAGE OF DARIEN, WALWORTH
COUNTY, WISCONSIN
MAY 14, 1954

George T. Dunham
GEORGE T. DUNHAM, SURVEYOR
DELAVER, WISCONSIN